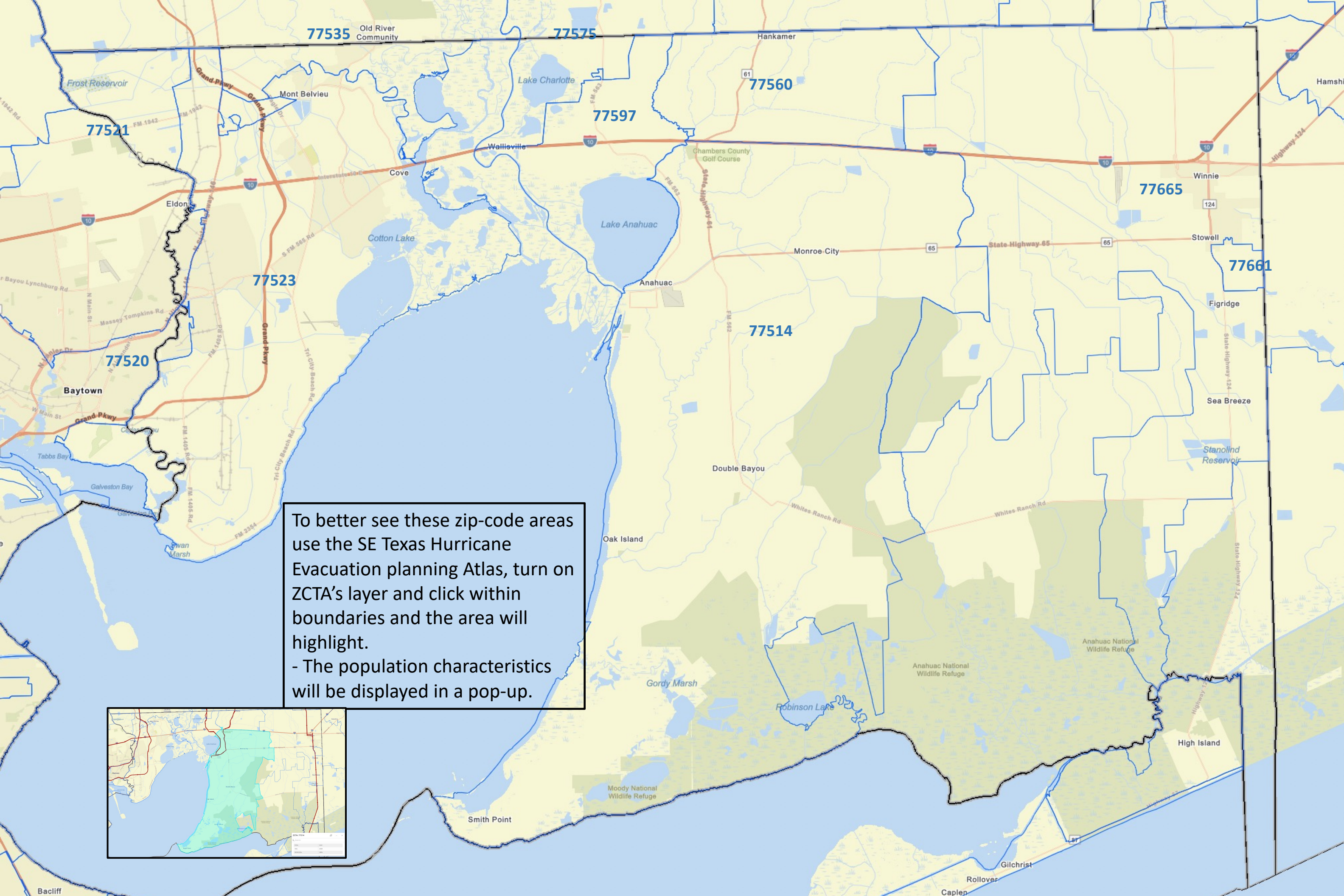


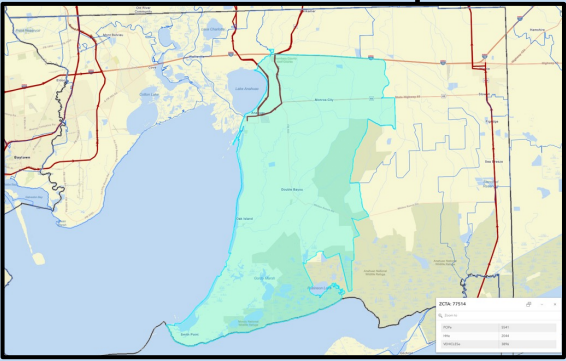
Chambers County

Key issues to consider:

- 1) Direct surge risk to populations all around Trinity Bay, around the lakes in northwest, and even around Stowell and Winnie.
- 2) Indirect surge risk due to roadway flooding (i.e., Double Bayou and northwestern section of the county)
- 3) There are also zip-code changes
- 4) Potential consistencies with Liberty and Harris counties' zones.



To better see these zip-code areas use the SE Texas Hurricane Evacuation planning Atlas, turn on ZCTA's layer and click within boundaries and the area will highlight.
- The population characteristics will be displayed in a pop-up.



ZIP CODE	POPULATION
77521	10,000
77523	10,000
77520	10,000
77521	10,000
77523	10,000
77520	10,000

Zone C

Zone C

Zone B

Zone B

Zone B

Zone B

Zone A

To compare new and old zip-code areas use the planning Atlas, turn on Zip Code Tabulation Areas (ZCTAs) layer and HGAC's (boundary & fill) layers and click within boundaries. ZCTA will highlight initially but scroll through pop-ups and older zips will highlight.

ZCTA: 77597

Zoom to

POPe	398
HHe	190
VEHICLESe	

1 of 2

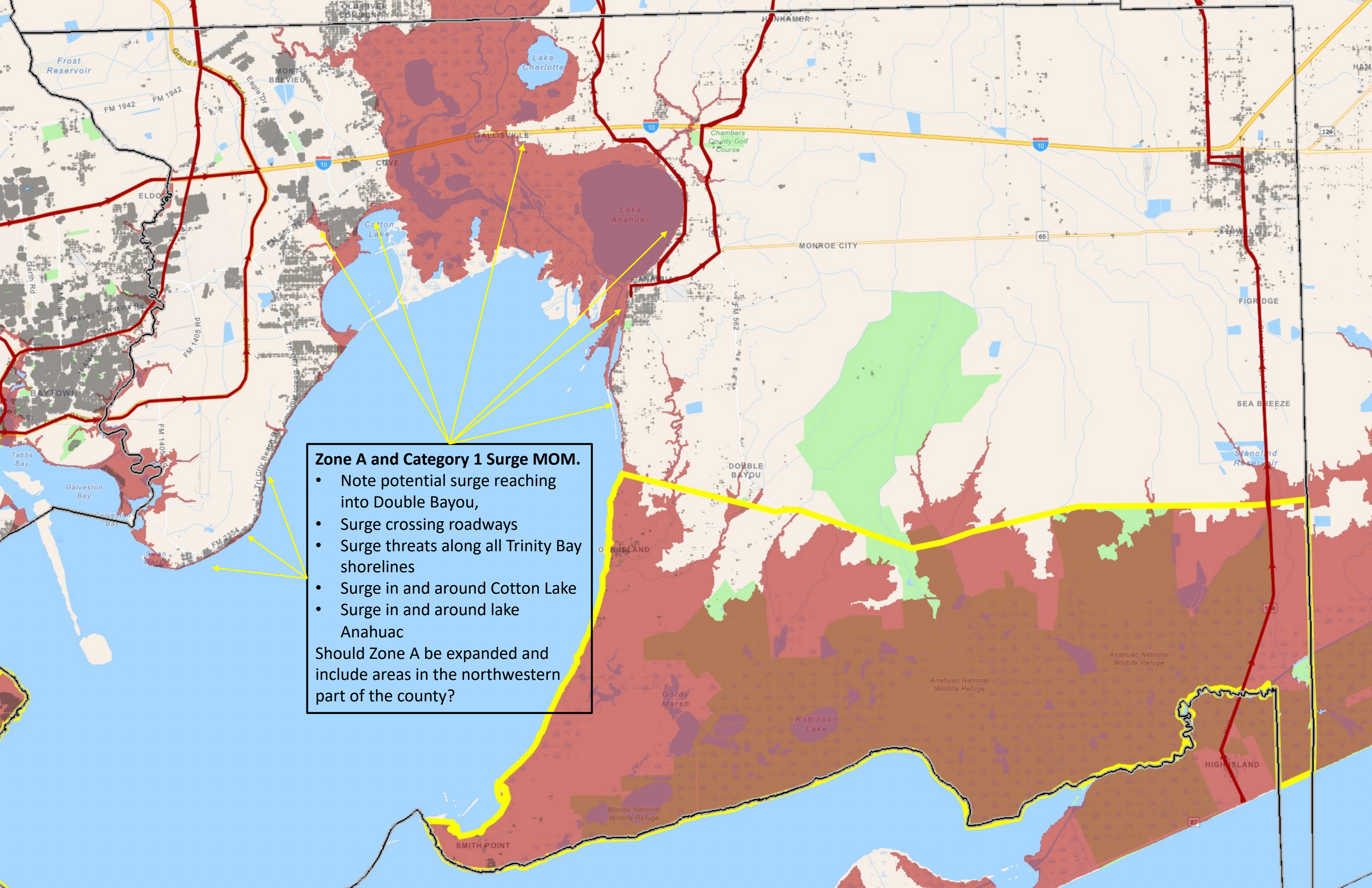
WALLISVILLE, CHAMBERS

Zoom to

ACS 2022 5-Year Estimates

Zone	Zip-Zone B
Zip5digit	77597
ZoneCode	2
LS_POP	1510
ZCTA_POP	398
ZCTA_HH	190
ZCTA_VEH	0

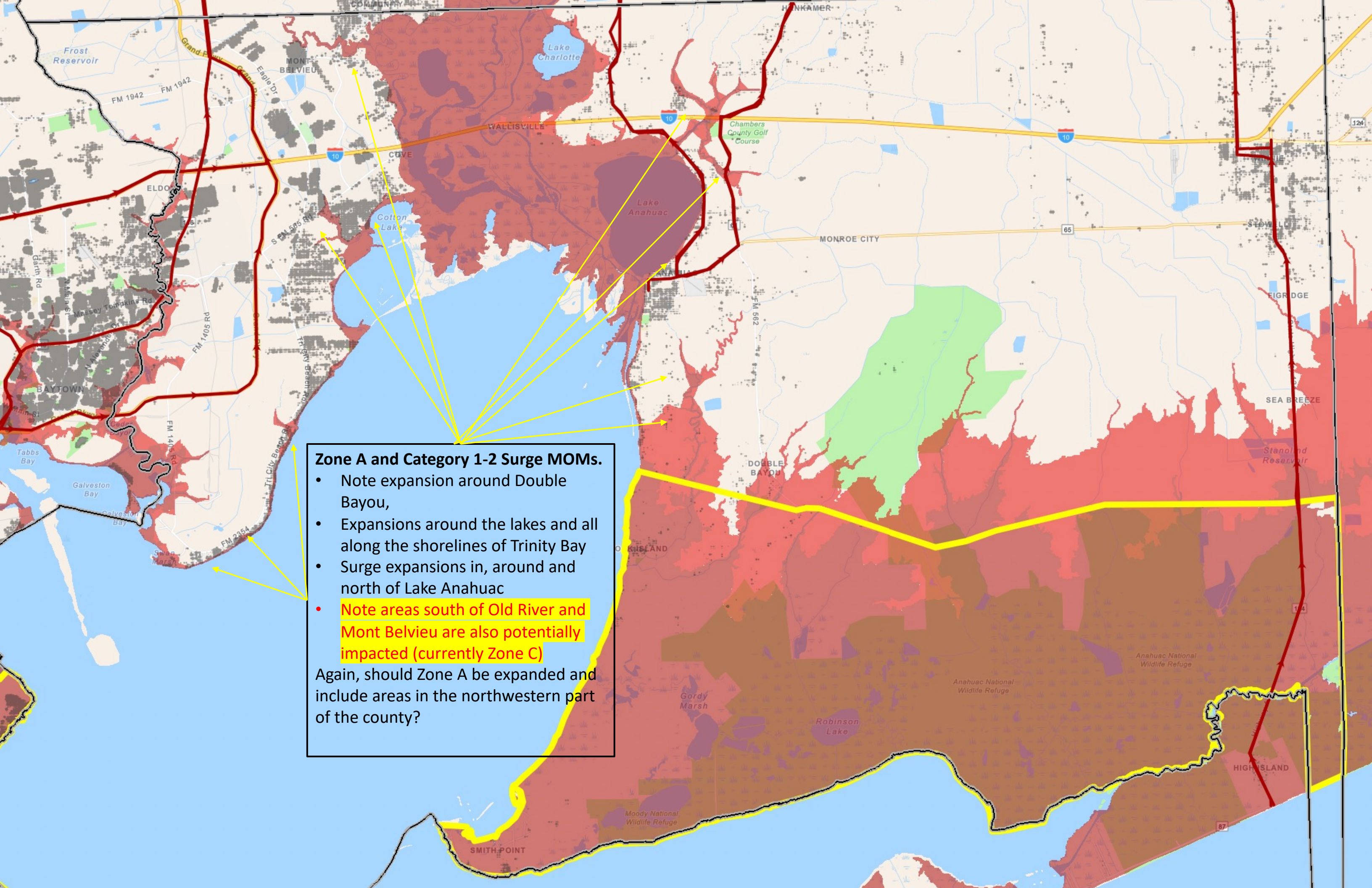
2 of 2



Zone A and Category 1 Surge MOM.

- Note potential surge reaching into Double Bayou,
- Surge crossing roadways
- Surge threats along all Trinity Bay shorelines
- Surge in and around Cotton Lake
- Surge in and around lake Anahuac

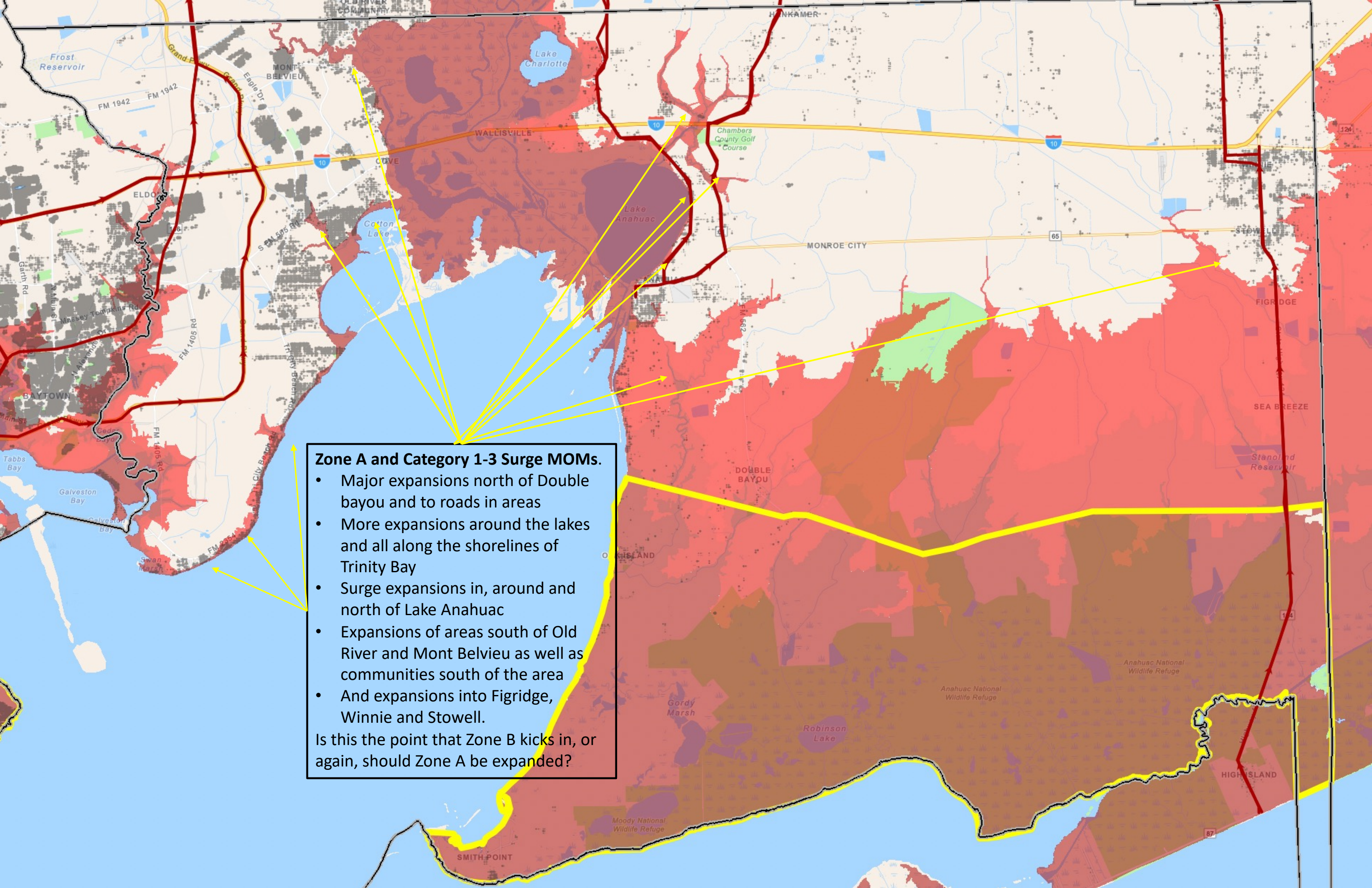
Should Zone A be expanded and include areas in the northwestern part of the county?



Zone A and Category 1-2 Surge MOMs.

- Note expansion around Double Bayou,
- Expansions around the lakes and all along the shorelines of Trinity Bay
- Surge expansions in, around and north of Lake Anahuac
- **Note areas south of Old River and Mont Belvieu are also potentially impacted (currently Zone C)**

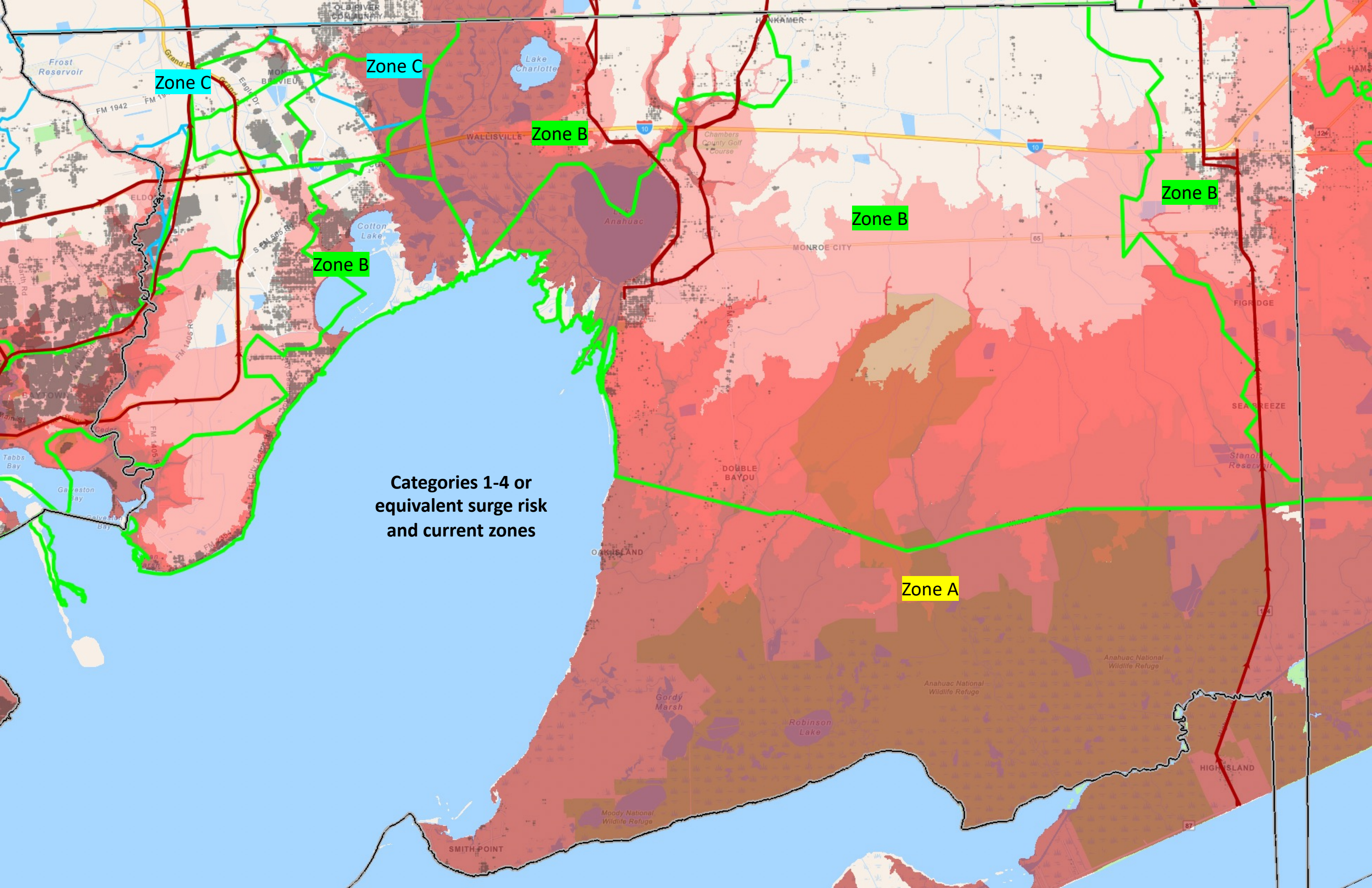
Again, should Zone A be expanded and include areas in the northwestern part of the county?



Zone A and Category 1-3 Surge MOMs.

- Major expansions north of Double bayou and to roads in areas
- More expansions around the lakes and all along the shorelines of Trinity Bay
- Surge expansions in, around and north of Lake Anahuac
- Expansions of areas south of Old River and Mont Belvieu as well as communities south of the area
- And expansions into Figridge, Winnie and Stowell.

Is this the point that Zone B kicks in, or again, should Zone A be expanded?



Zone C

Zone C

Zone B

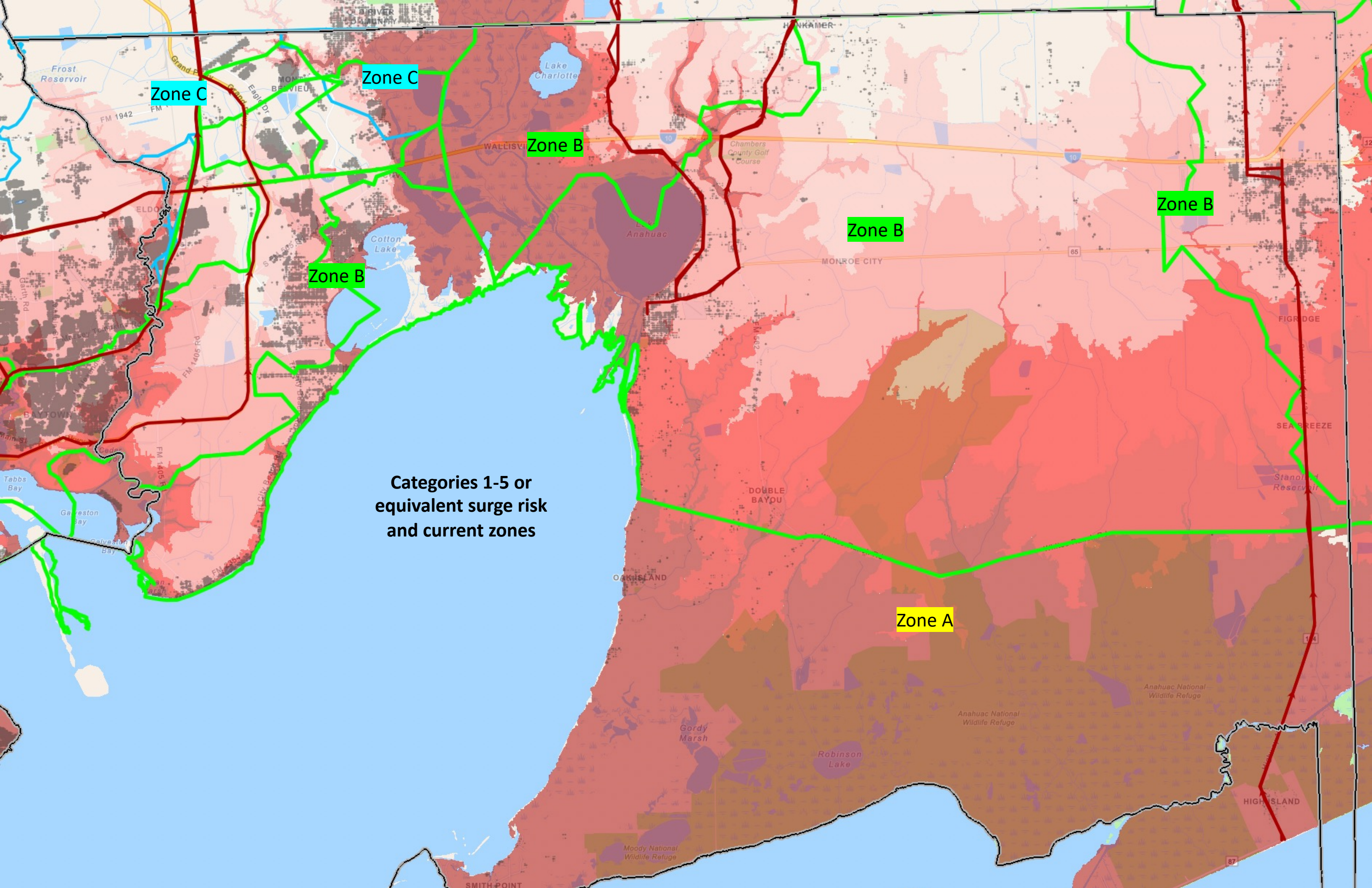
Zone B

Zone B

Zone B

Zone A

Categories 1-4 or
equivalent surge risk
and current zones



Zone C

Zone C

Zone B

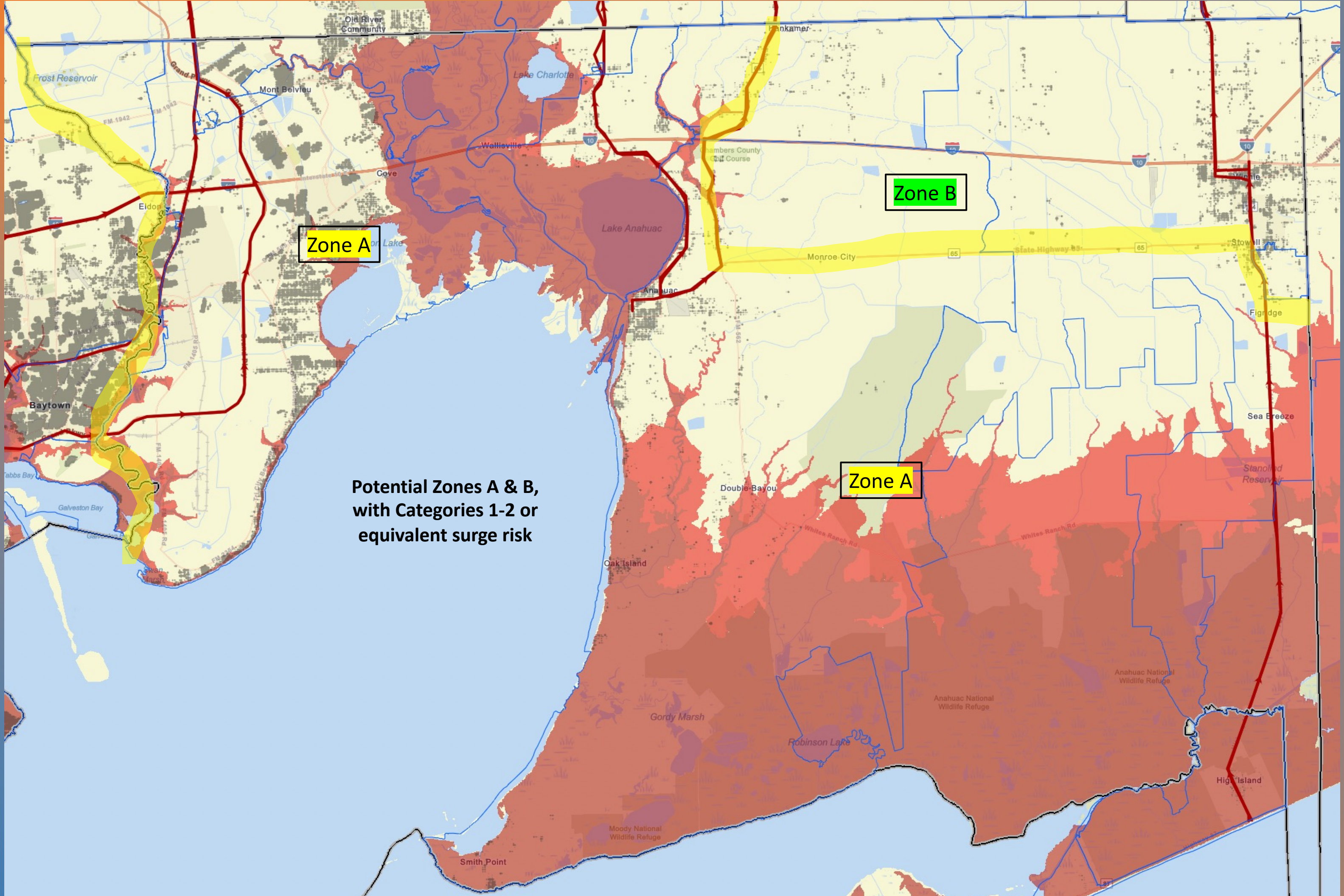
Zone B

Zone B

Zone B

Categories 1-5 or
equivalent surge risk
and current zones

Zone A

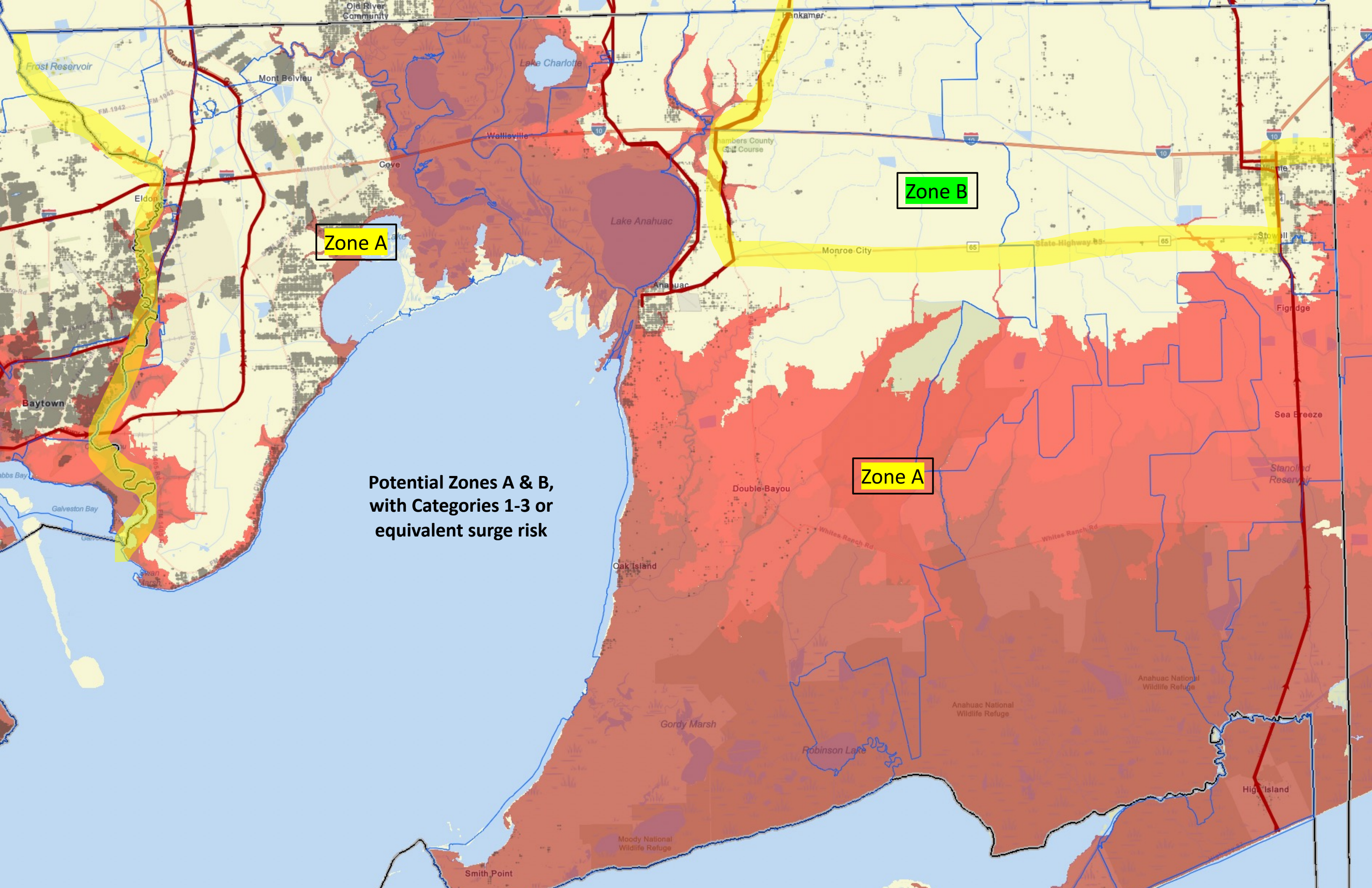


Zone A

Zone B

Zone A

Potential Zones A & B,
with Categories 1-2 or
equivalent surge risk



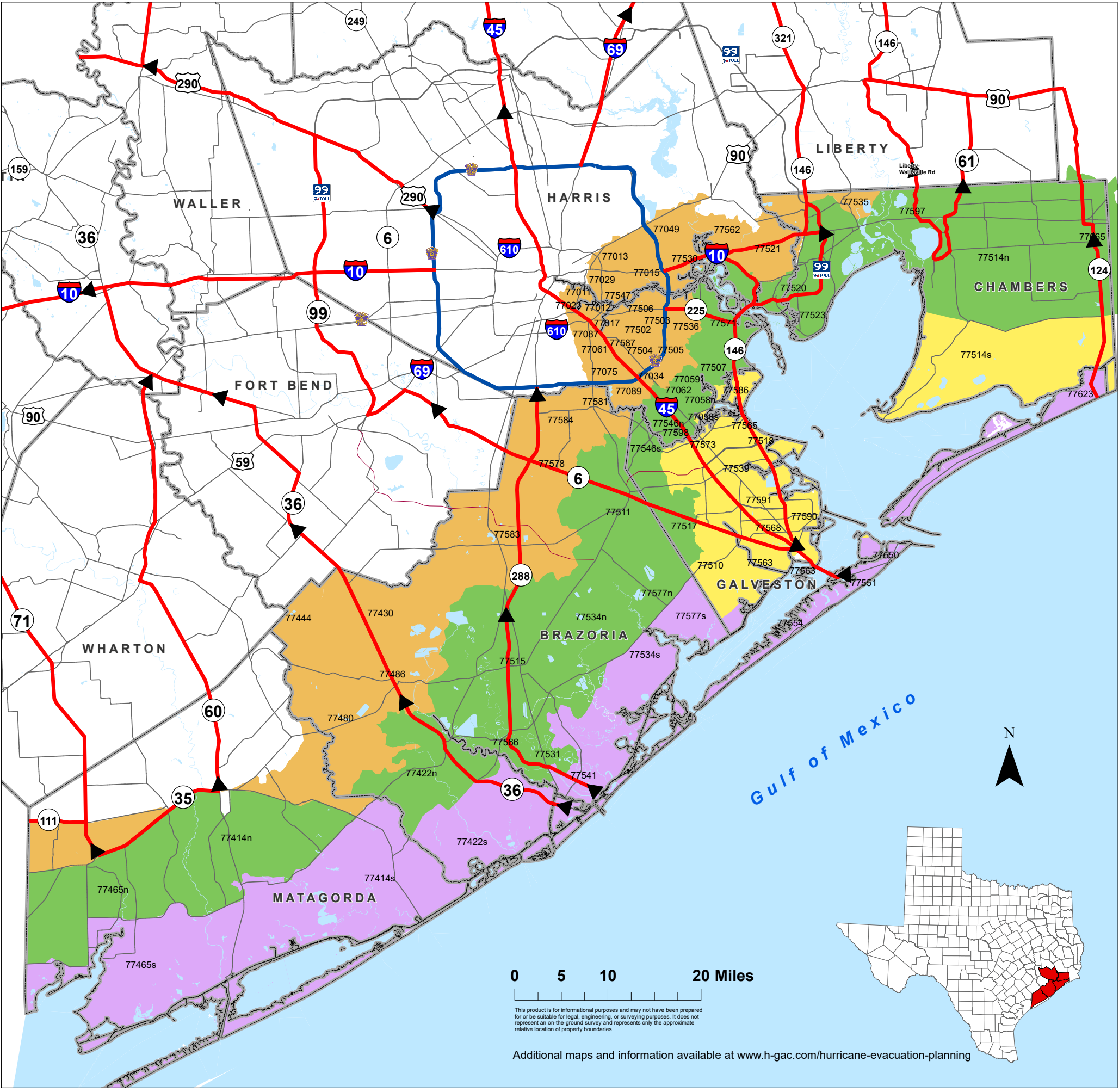
Zone A

Zone B

Zone A

Potential Zones A & B,
with Categories 1-3 or
equivalent surge risk

Brazoria, Chambers, Galveston, Harris and Matagorda Hurricane Evacuation Zip-Zones Coastal, A, B, C



ZIP ZONE COASTAL				
77414s	77422s	77465s	77534s	77541
77550	77551	77554	77563	77577s
77623				
ZIP ZONE A				
77058s	77510	77514s	77518	77539
77563	77565	77568	77573	77586
77590	77591			
ZIP ZONE B				
77058n	77059	77062	77414n	77422n
77465n	77507	77511	77514n	77515
77517	77520	77523	77531	77534n
77546n	77546s	77560	77566	77571
77577n	77597	77598	77665	
ZIP ZONE C				
77011	77012	77013	77015	77017
77023	77029	77034	77049	77061
77075	77087	77089	77430	77444
77480	77486	77502	77503	77504
77505	77506	77521	77530	77535
77536	77547	77562	77578	77581
77583	77584	77587		

Some zip codes are split into north (n) and south (s) for evacuation purposes.

Route Designation

- Evacuation Corridors
- Evacuation Connections
- Other Roads
- County Boundary

