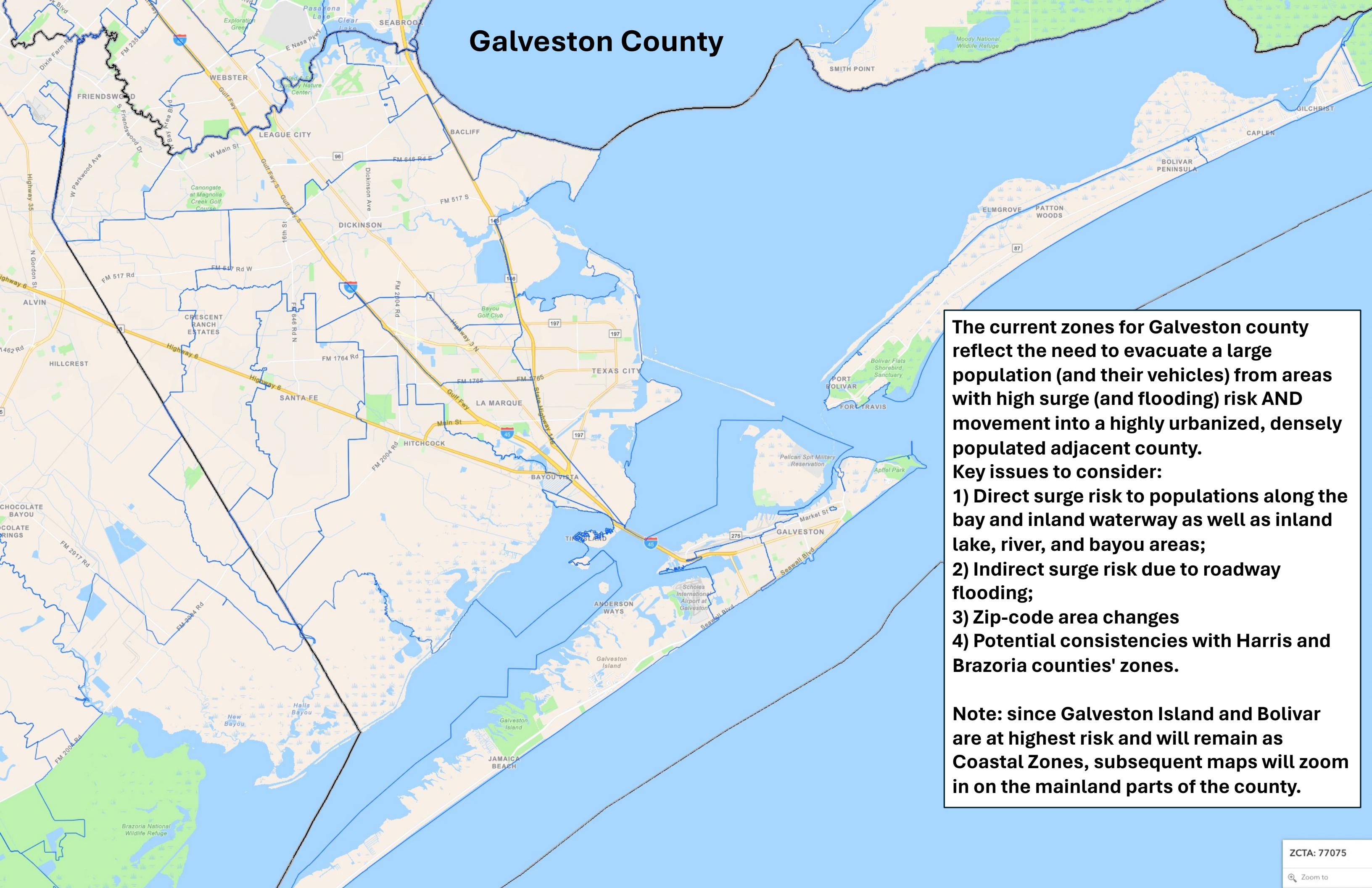


Galveston County

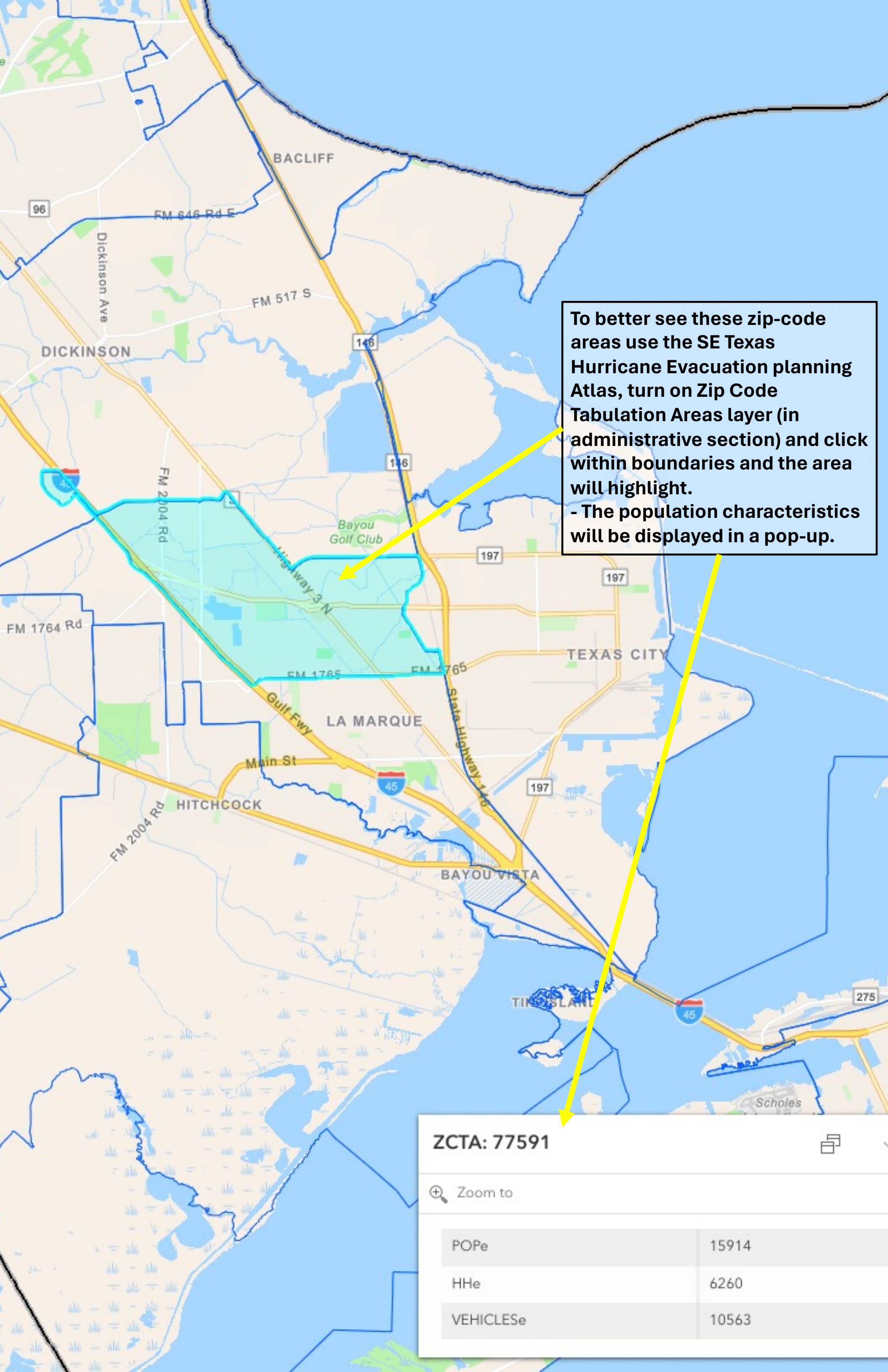


The current zones for Galveston county reflect the need to evacuate a large population (and their vehicles) from areas with high surge (and flooding) risk AND movement into a highly urbanized, densely populated adjacent county.

Key issues to consider:

- 1) Direct surge risk to populations along the bay and inland waterway as well as inland lake, river, and bayou areas;
- 2) Indirect surge risk due to roadway flooding;
- 3) Zip-code area changes
- 4) Potential consistencies with Harris and Brazoria counties' zones.

Note: since Galveston Island and Bolivar are at highest risk and will remain as Coastal Zones, subsequent maps will zoom in on the mainland parts of the county.

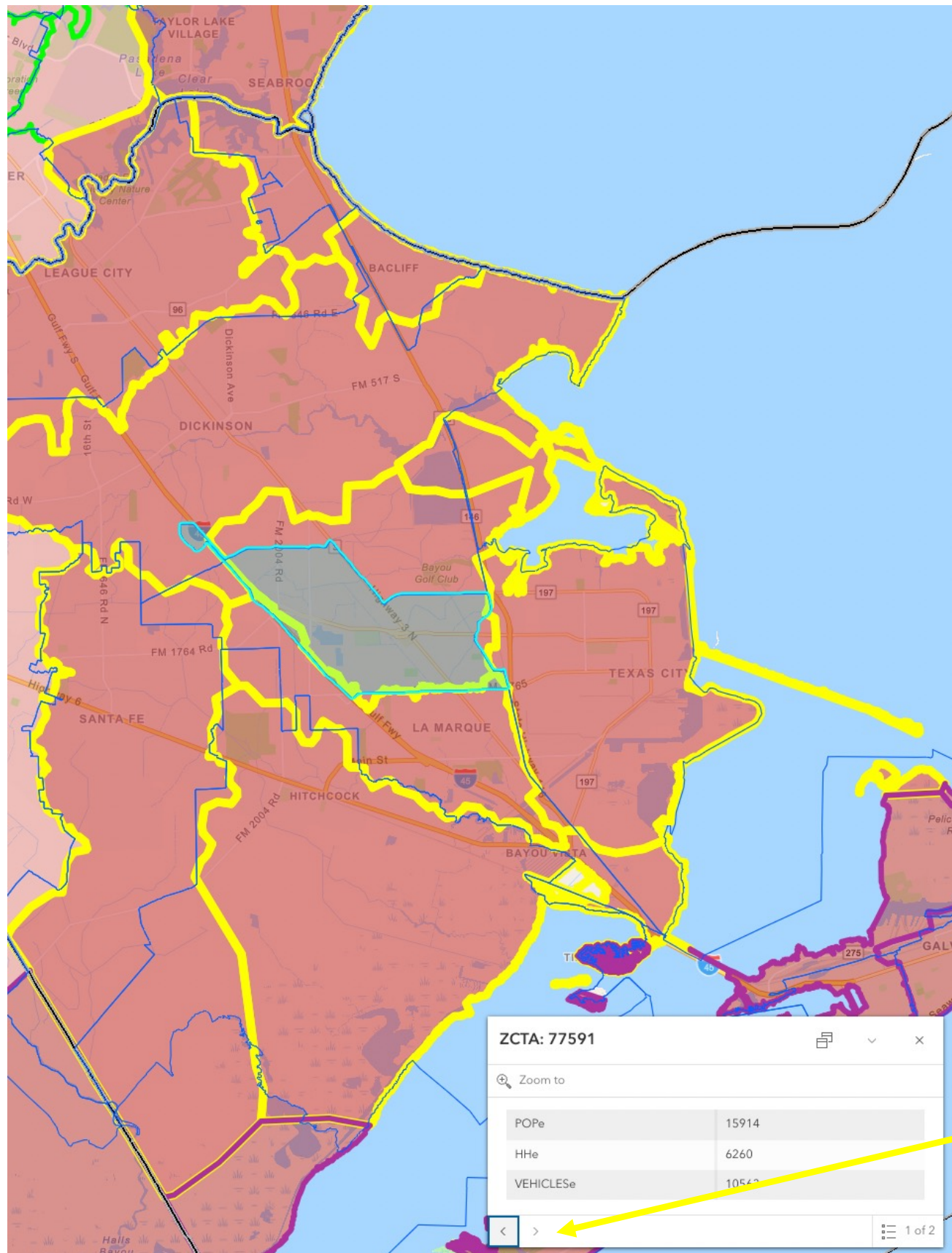


To better see these zip-code areas use the SE Texas Hurricane Evacuation planning Atlas, turn on Zip Code Tabulation Areas layer (in administrative section) and click within boundaries and the area will highlight.
- The population characteristics will be displayed in a pop-up.

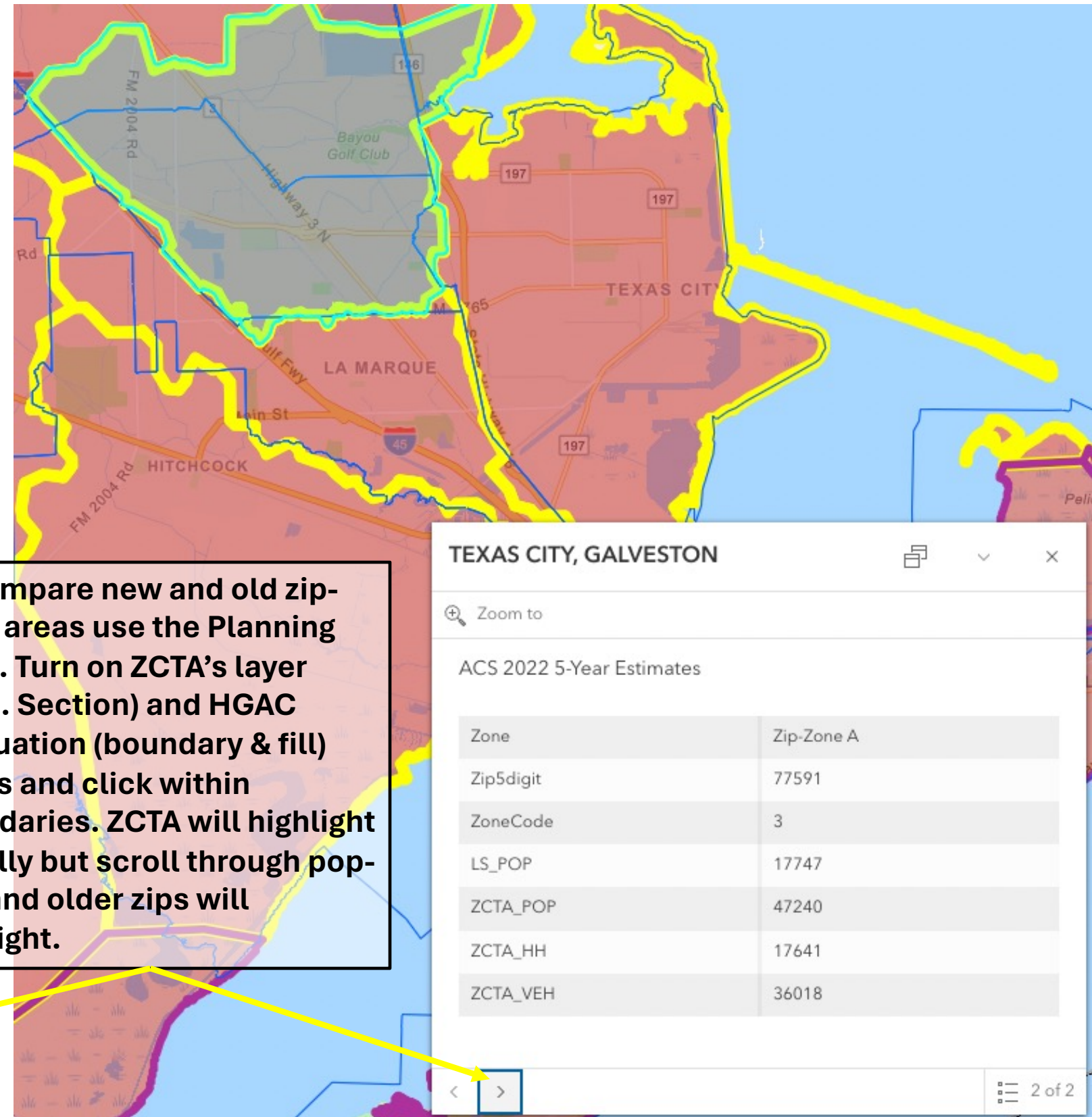
ZCTA: 77591

Zoom to

POPe	15914
HHe	6260
VEHICLESe	10563

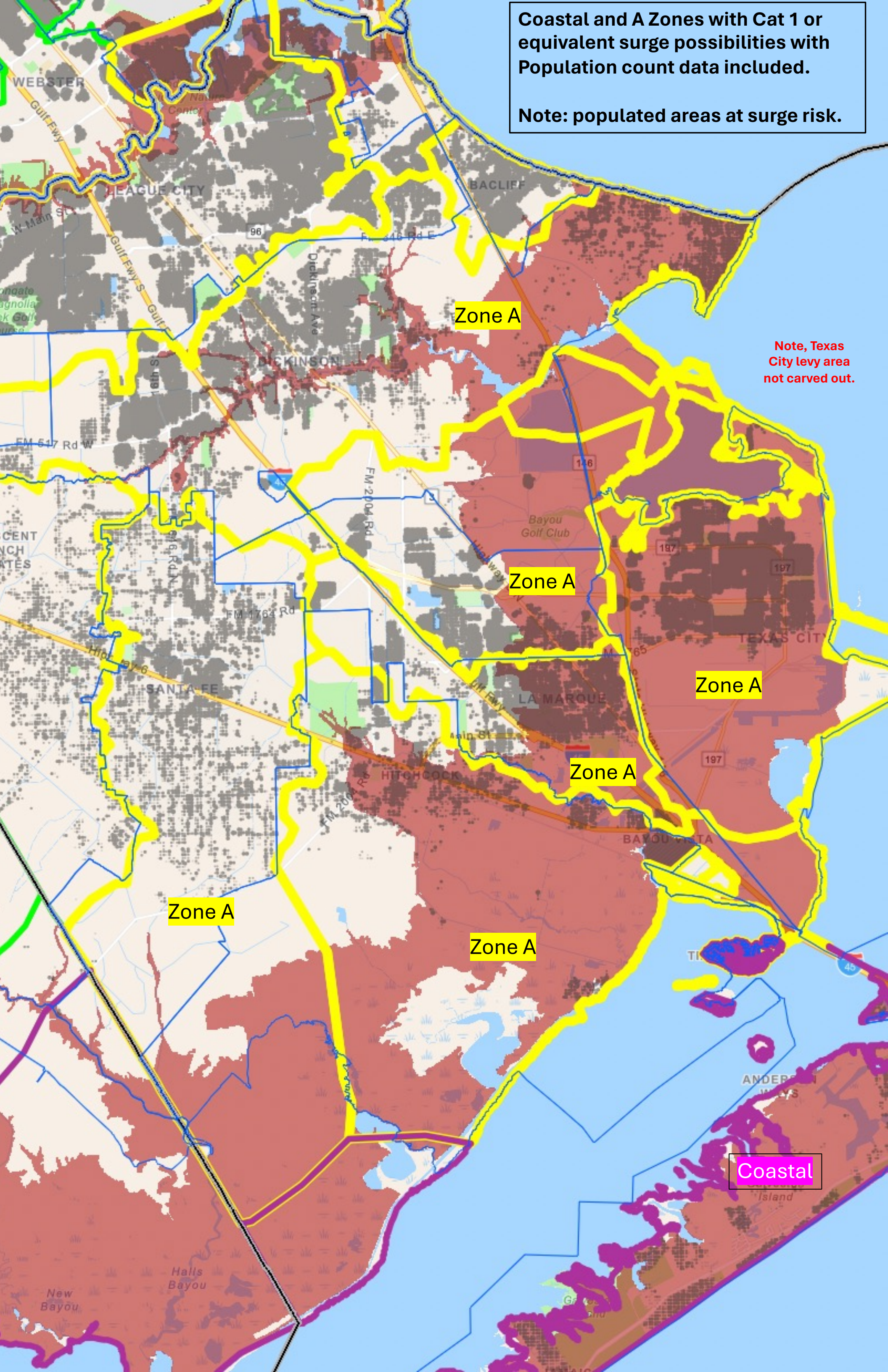


To compare new and old zip-code areas use the Planning Atlas. Turn on ZCTA's layer (Adm. Section) and HGAC evacuation (boundary & fill) layers and click within boundaries. ZCTA will highlight initially but scroll through pop-ups and older zips will highlight.



Coastal and A Zones with Cat 1 or equivalent surge possibilities with Population count data included.

Note: populated areas at surge risk.



Zone A

Note, Texas City levy area not carved out.

Zone A

Zone A

Zone A

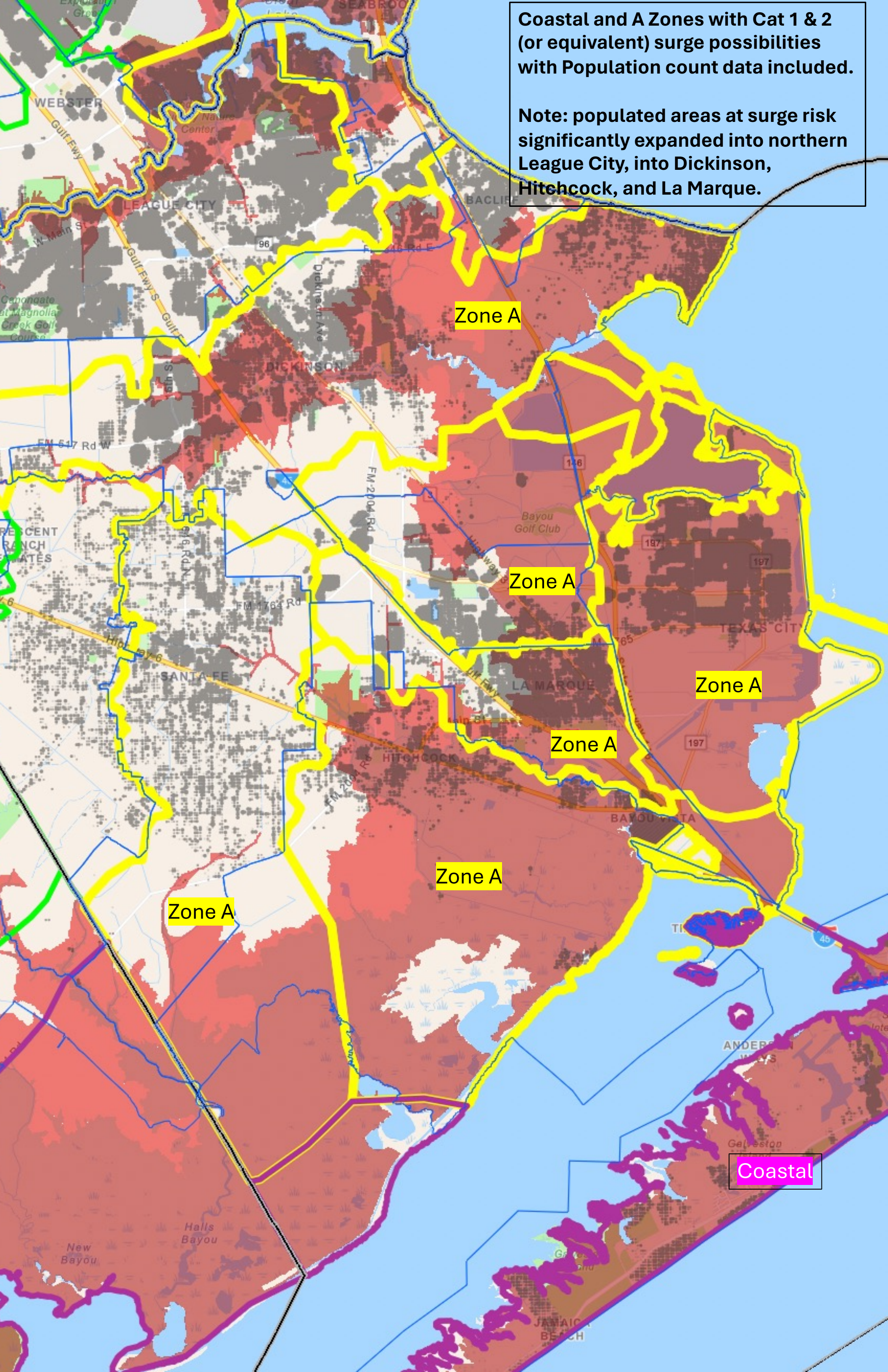
Zone A

Zone A

Coastal

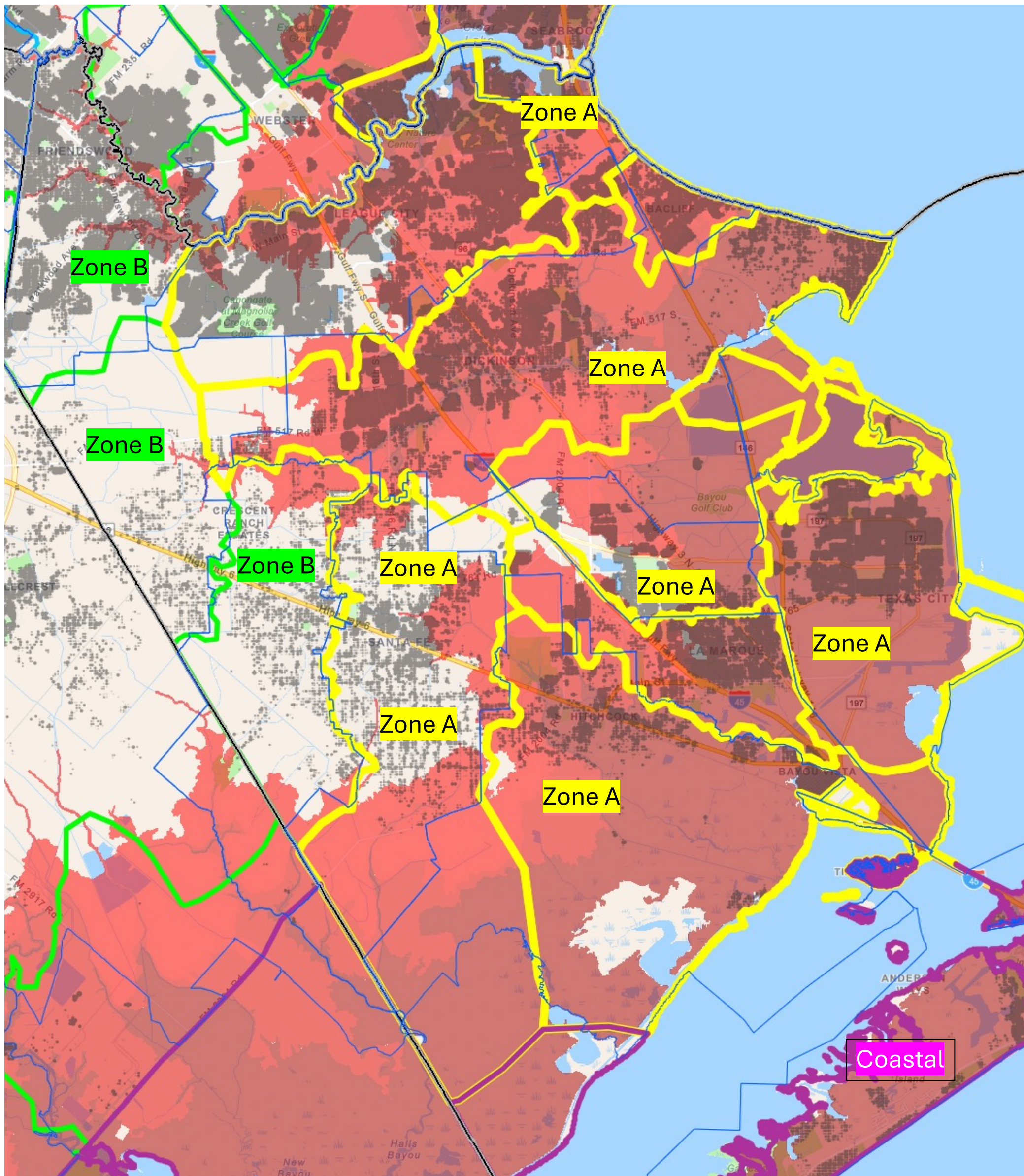
Coastal and A Zones with Cat 1 & 2 (or equivalent) surge possibilities with Population count data included.

Note: populated areas at surge risk significantly expanded into northern League City, into Dickinson, Hitchcock, and La Marque.



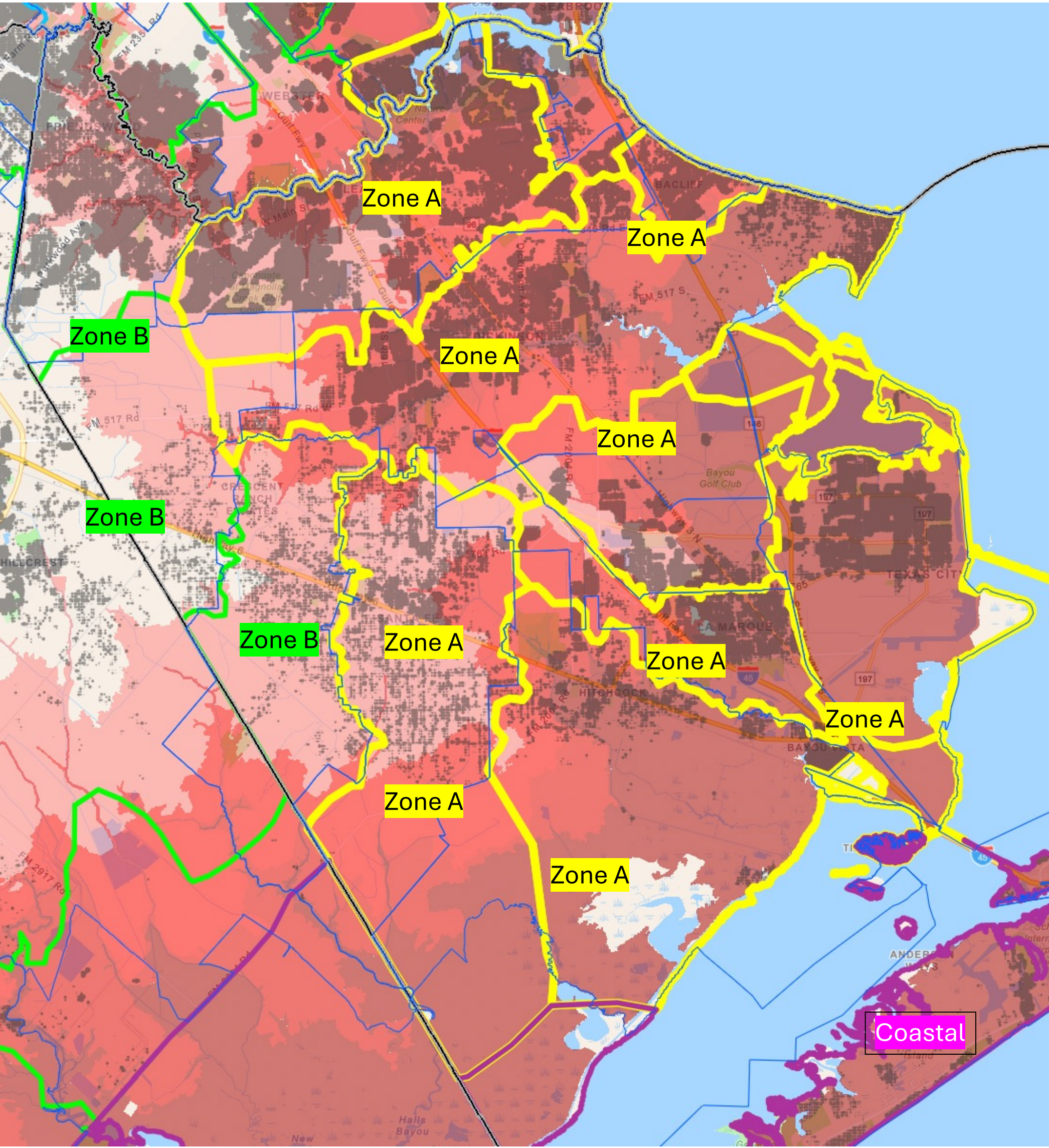
Coastal, A, & B Zones with Cat 1, 2 & 3 (or equivalent) surge possibilities with Population count data included.

Note: populated areas at surge risk significantly expanded well into current Zones A & B. These areas include League City, Friendswood, west Dickinson, and Santa Fe.



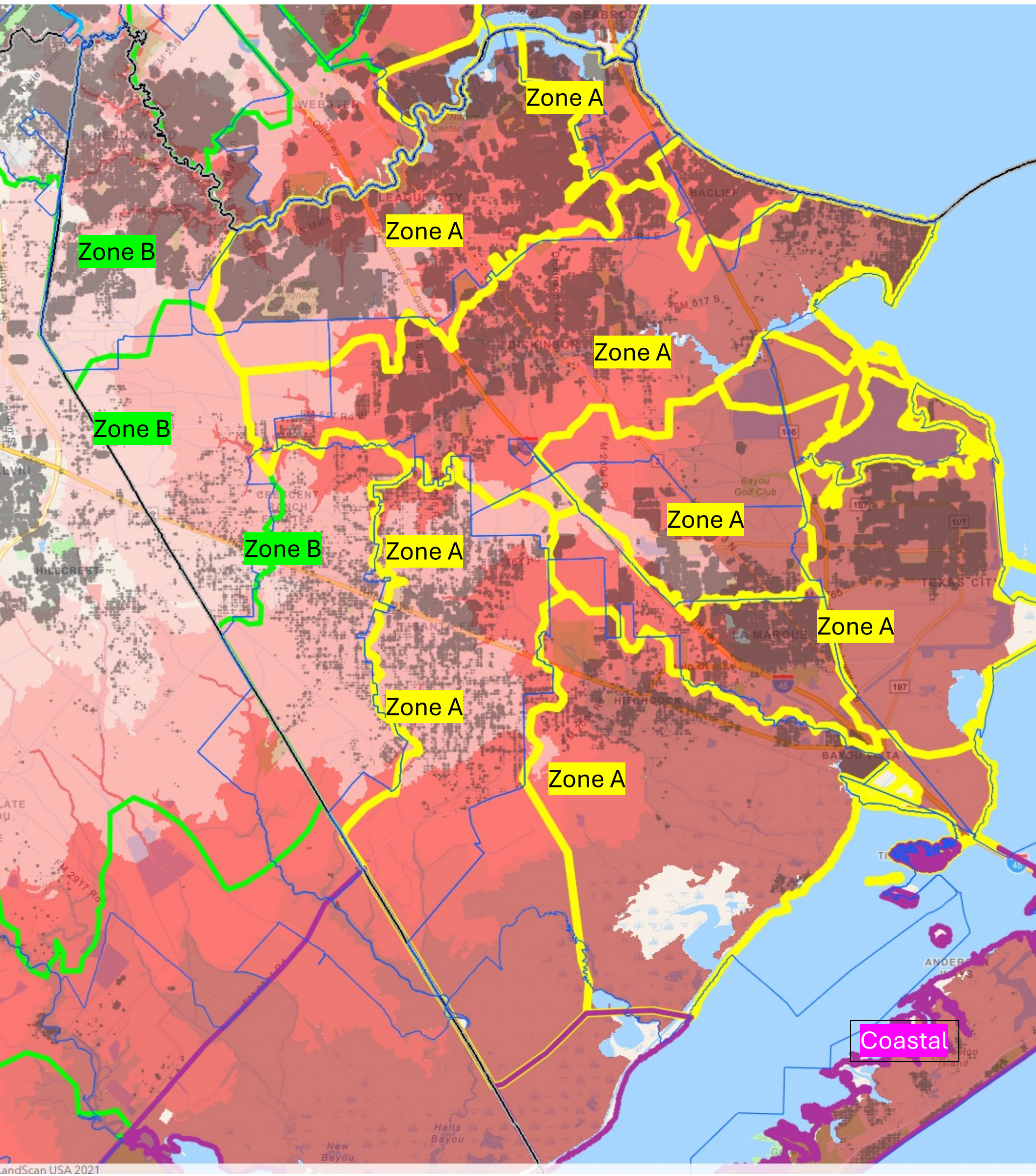
Coastal, A, and B Zones with Cat 1 - 4 (or equivalent) surge possibilities with Population count data included.

Note: populated areas at surge risk significantly expanded well into current Zones A & B and almost the entire county.



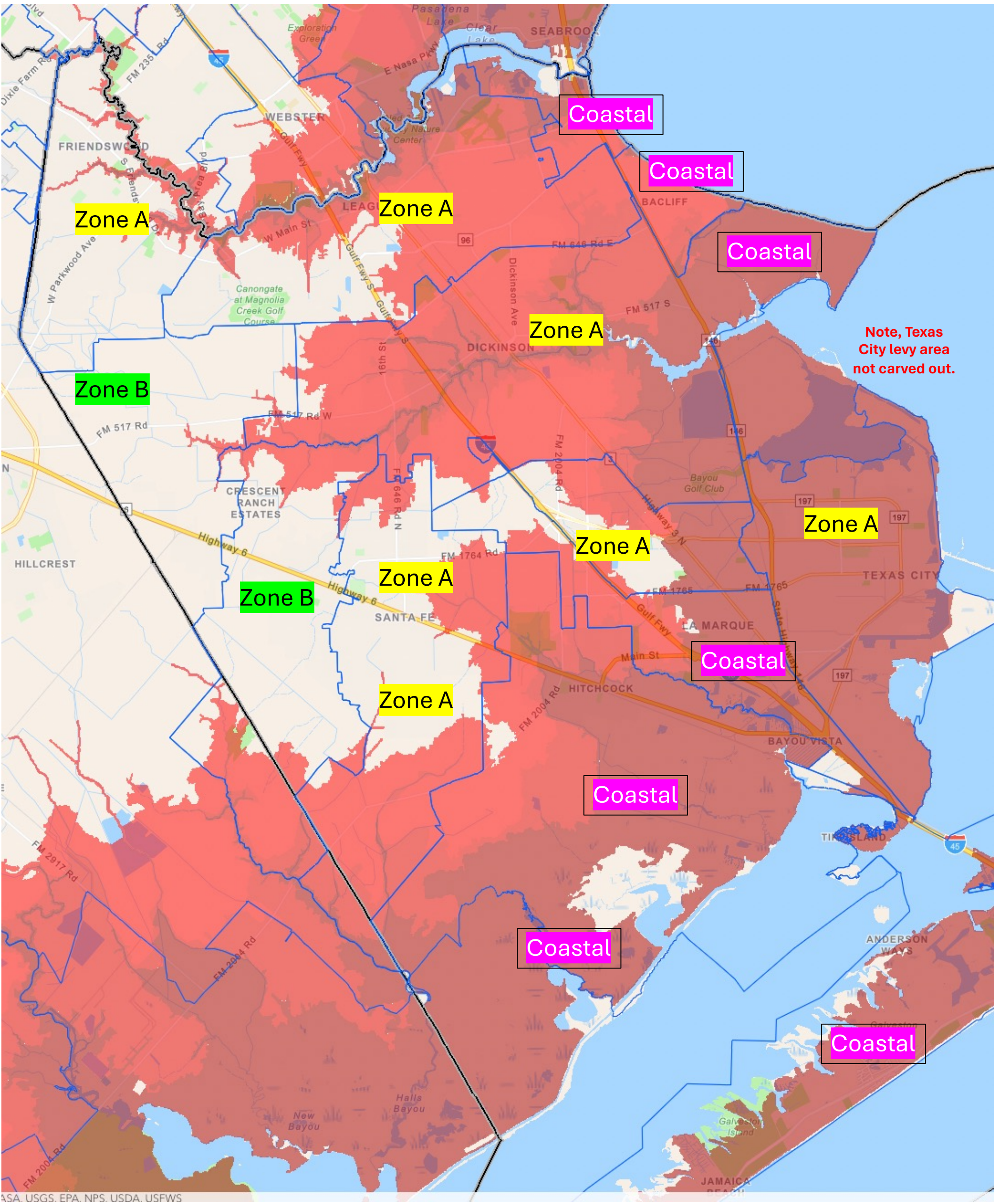
Coastal, A, and B Zones with Cat 1 - 5 (or equivalent) surge possibilities with Population count data included.

Note: populated areas at surge risk include all areas of the county.



This map reflects new zip-codes and Category 1-3 surge and offers potential zone modifications reflecting changing zip-code areas, surge risk issues, and consistency with Brazoria. This configuration can be assessed during traffic analysis. New coastal zone areas are relatively small in population.

We suggest working with both smoothed and precise surge data. The impacts of these modifications can be assessed through traffic analyses.



Brazoria, Chambers, Galveston, Harris and Matagorda Hurricane Evacuation Zip-Zones Coastal, A, B, C

ZIP ZONE COASTAL				
77414s	77422s	77465s	77534s	77541
77550	77551	77554	77563	77577s
77623				
ZIP ZONE A				
77058s	77510	77514s	77518	77539
77563	77565	77568	77573	77586
77590	77591			
ZIP ZONE B				
77058n	77059	77062	77414n	77422n
77465n	77507	77511	77514n	77515
77517	77520	77523	77531	77534n
77546n	77546s	77560	77566	77571
77577n	77597	77598	77665	
ZIP ZONE C				
77011	77012	77013	77015	77017
77023	77029	77034	77049	77061
77075	77087	77089	77430	77444
77480	77486	77502	77503	77504
77505	77506	77521	77530	77535
77536	77547	77562	77578	77581
77583	77584	77587		

Some zip codes are split into north (n) and south (s) for evacuation purposes.

Route Designation

- Evacuation Corridors
- Evacuation Connections
- Other Roads
- County Boundary

