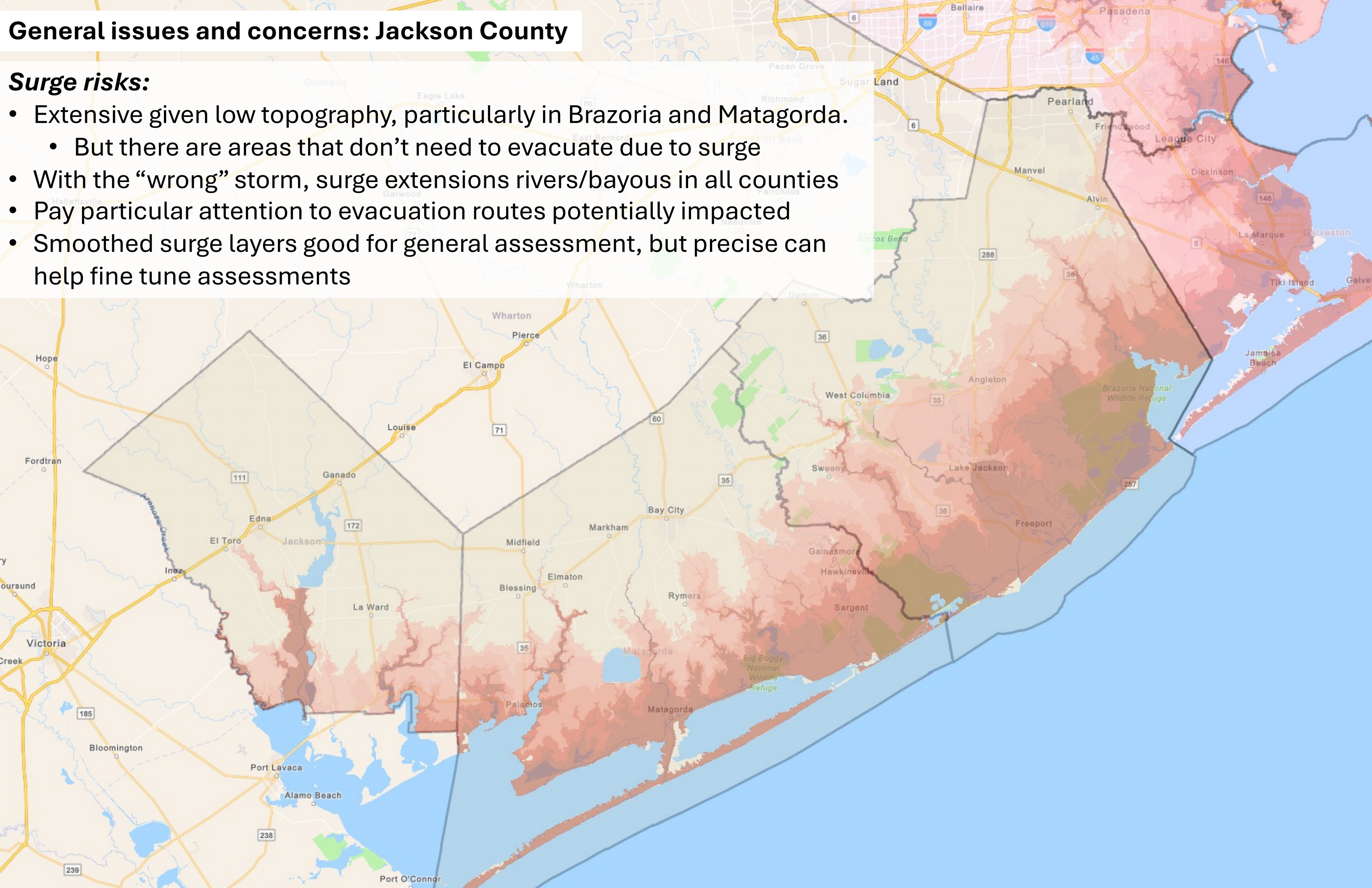


## General issues and concerns: Jackson County

### *Surge risks:*

- Extensive given low topography, particularly in Brazoria and Matagorda.
  - But there are areas that don't need to evacuate due to surge
- With the “wrong” storm, surge extensions rivers/bayous in all counties
- Pay particular attention to evacuation routes potentially impacted
- Smoothed surge layers good for general assessment, but precise can help fine tune assessments





# Jackson County Assessment

Major issues and difficulties:

Surge is driven up into the county via:

- Garcitas Creek between Jackson and Victoria counties
- The Lavaca River and associated bayous between Texana
- Carancahua bay and creeks

**TXDOT Evacuation Routes**

Major Evacuation Routes

Potential Contraflow

Potential EvacuLanes

**Surge Zones (Smoothed)**

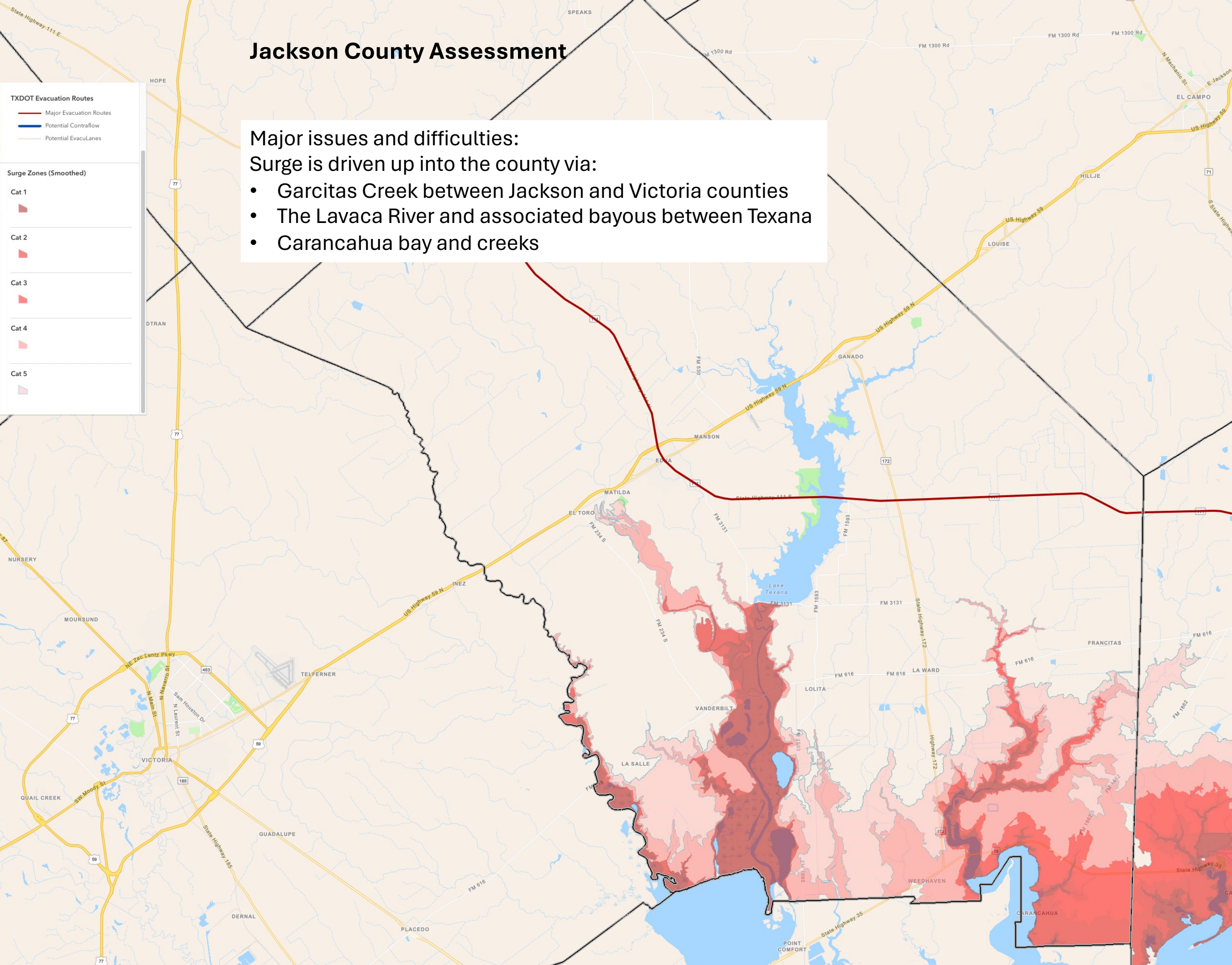
Cat 1

Cat 2

Cat 3

Cat 4

Cat 5



The map displays Jackson County with various geographical features and infrastructure. Major evacuation routes are shown as thick red lines, while potential contraflow and evacuation lanes are indicated by thinner blue and orange lines. Surge zones are color-coded from dark red (Cat 1) to light pink (Cat 5). The map includes labels for major roads like State Highway 77, State Highway 59, and State Highway 172, as well as local roads like FM 1300 Rd and FM 616. Key locations such as Hope, DTRAN, EL CAMPO, HILLJE, LOUISE, GANADO, MANSON, EDNA, MATILDA, EL TORO, INEZ, Telferner, VICTORIA, GUADALUPE, DERNAL, PLACEDO, LA SALLE, VANDERBILT, LOLITA, LA WARD, FRANCITAS, WEEDHAVEN, CARANCAHUA, and POINT COMFORT are marked. The Gulf of Mexico is visible at the bottom right.



## Jackson County Assessment

### TXDOT Evacuation Routes

- Major Evacuation Routes
- Potential Contraflow
- Potential EvacuLanes

### Surge Zones (Smoothed)

Cat 1



Cat 2



Cat 3



Cat 4



Cat 5



### Major issues and difficulties:

- Surge is driven up into the county via:
  - Garcitas Creek between Jackson and Victoria counties
  - The Lavaca River and associated bayous between Texana
  - Carancahua bay and creeks
- Local input and insights are critical for establishing meaningful zones...

