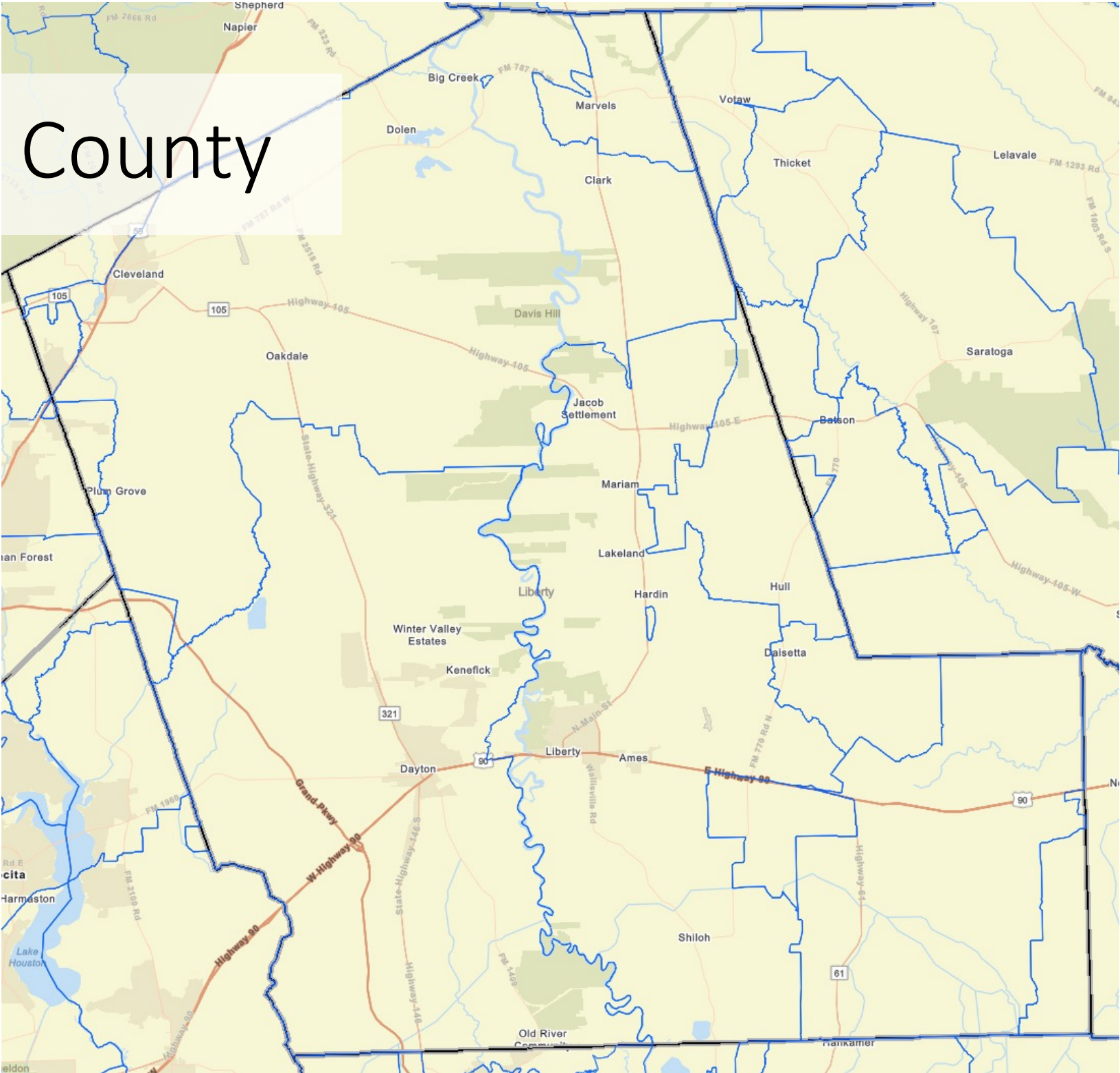
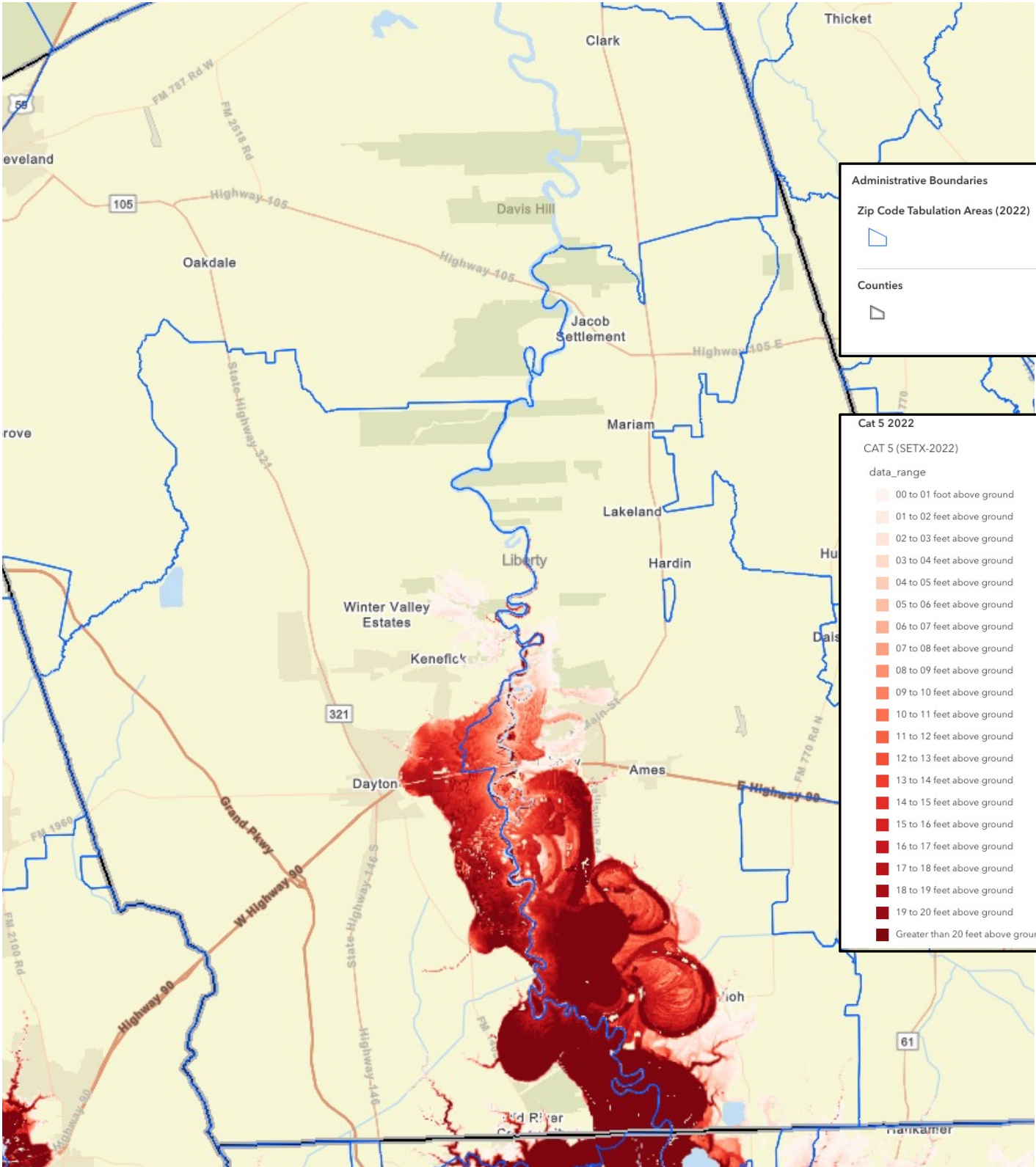


Liberty County



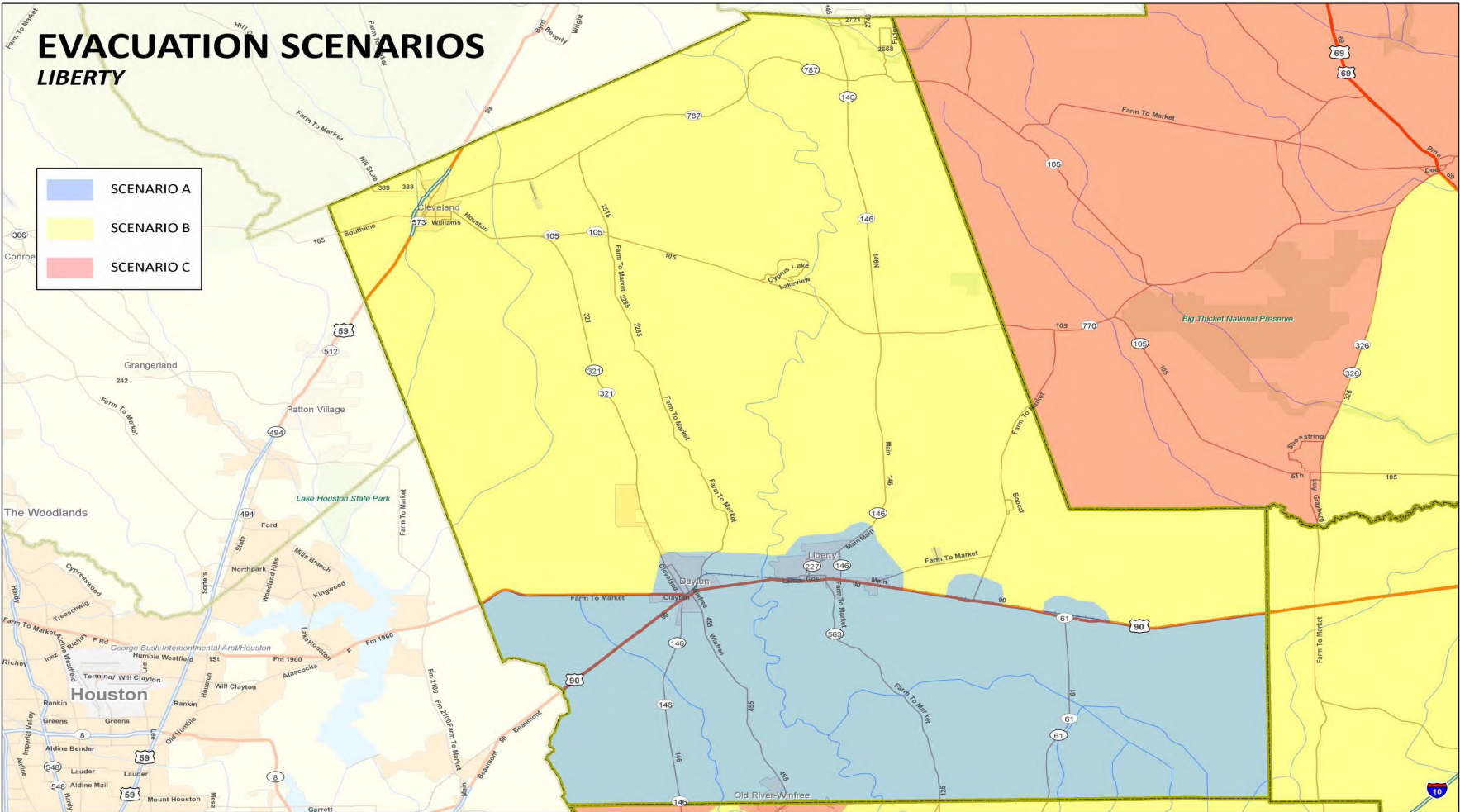
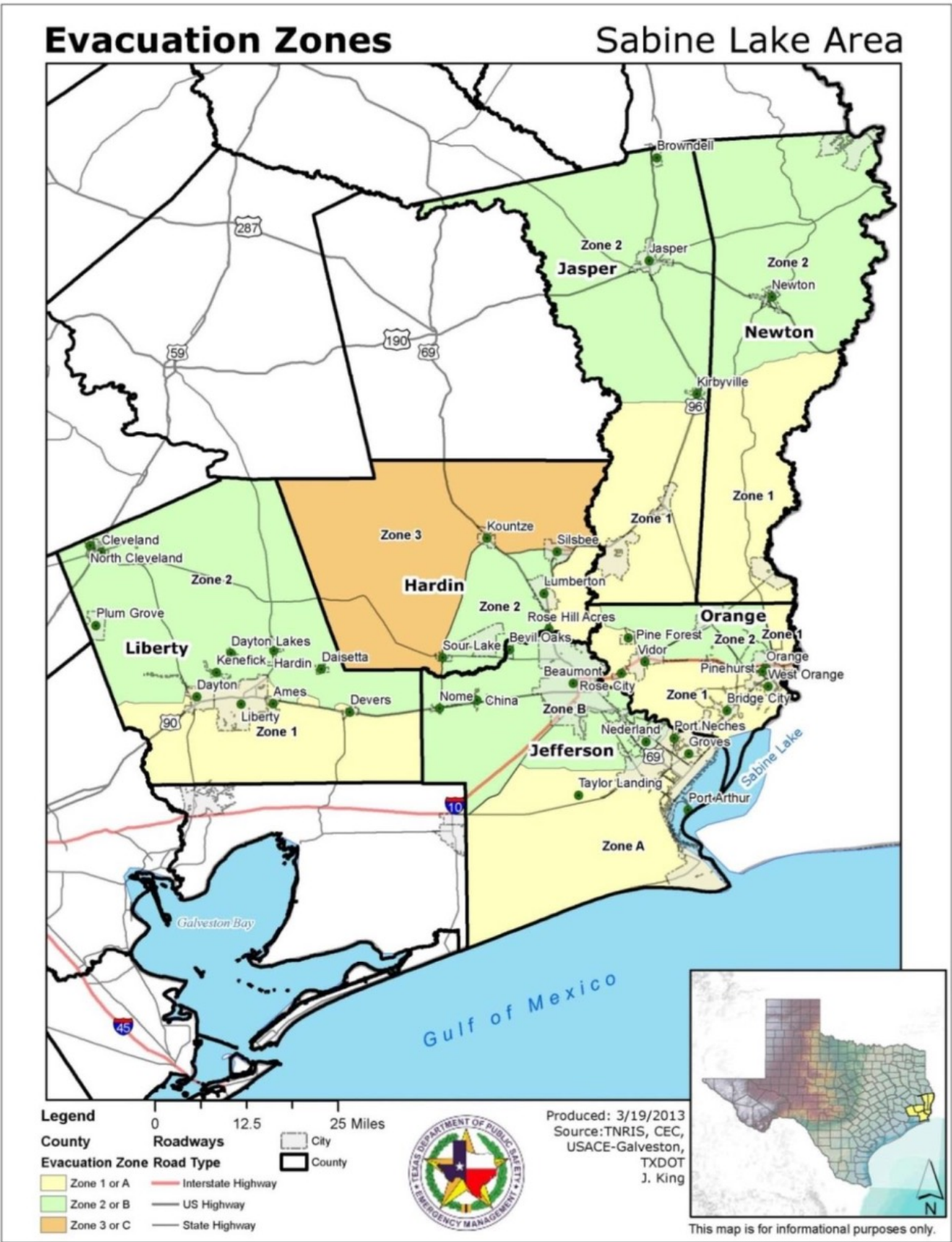
Maps on the following pages provide specific spatial data on Liberty county related to surge hazard, population concentrations and distribution, highways, roads, rail lines and offers some potential evacuation zone boundaries.

The map above is just a general map of Liberty county and its municipalities, primary road networks, zip code areas, etc. The map to the right includes precise surge flooding depths assuming a category 5 storm MOM.

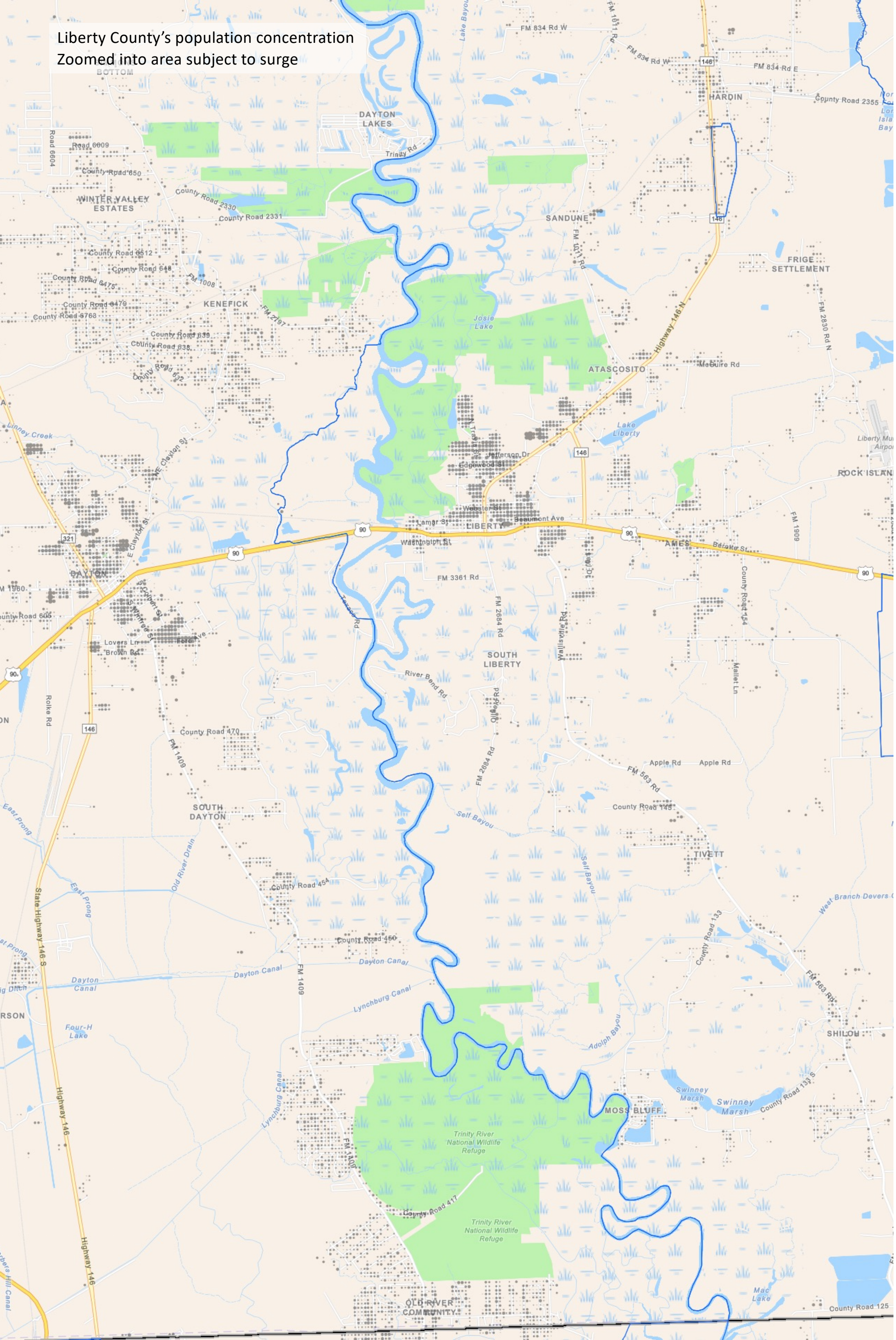


Example maps from 2011 Evacuation Traffic Analysis.

These are not recommended, given current surge data but are provided simply as examples from previous studies.



Liberty County's population concentration
Zoomed into area subject to surge



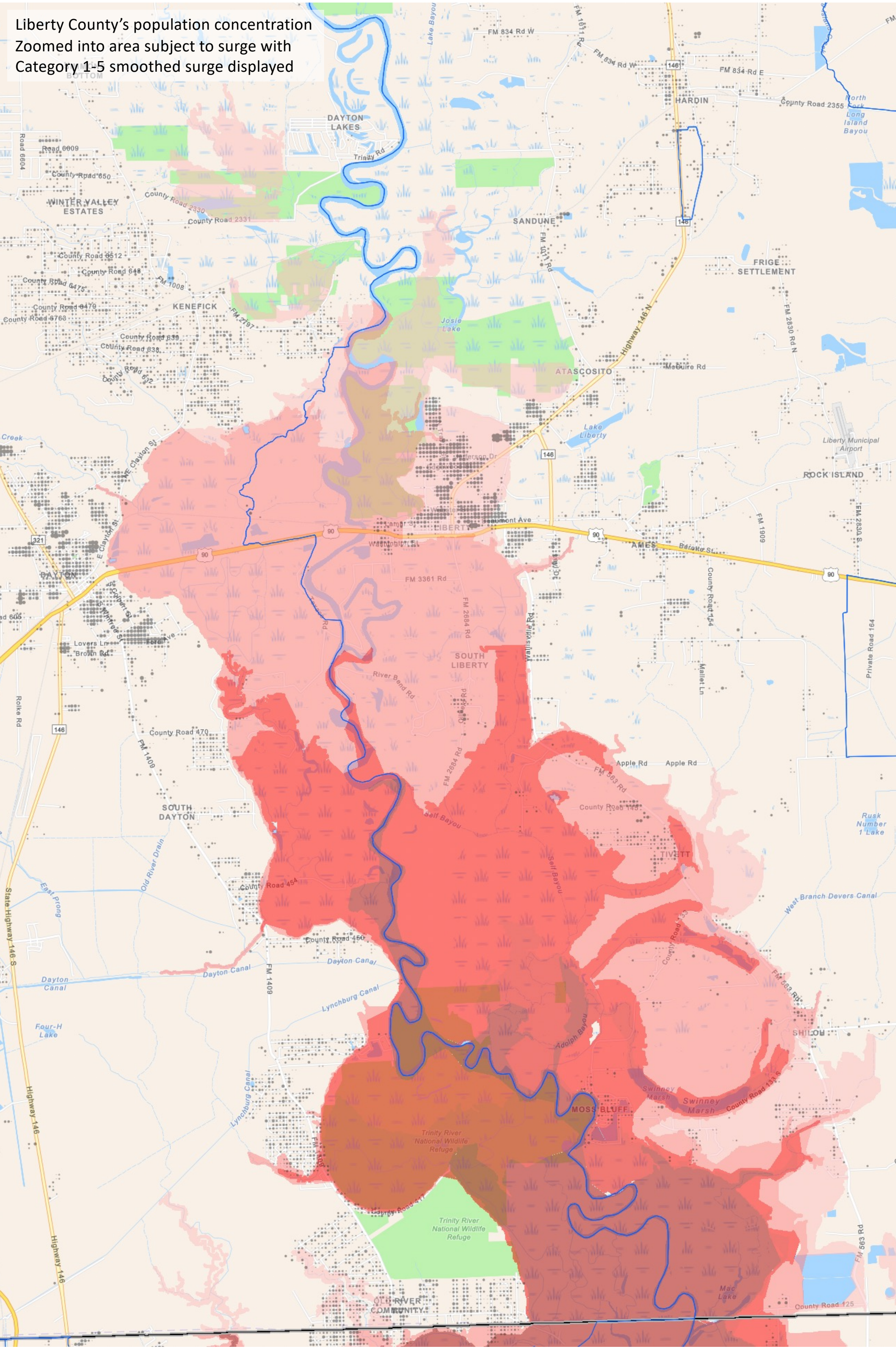
Liberty County's population concentration
Zoomed into area subject to surge with
Category 1 smoothed surge displayed

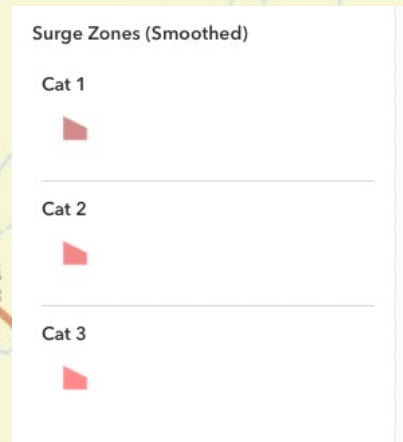
Liberty County's population concentration
Zoomed into area subject to surge with
Category 1-2 smoothed surge displayed

Liberty County's population concentration
Zoomed into area subject to surge with
Category 1-3 smoothed surge displayed

Liberty County's population concentration
Zoomed into area subject to surge with
Category 1-4 smoothed surge display

Liberty County's population concentration
Zoomed into area subject to surge with
Category 1-5 smoothed surge displayed



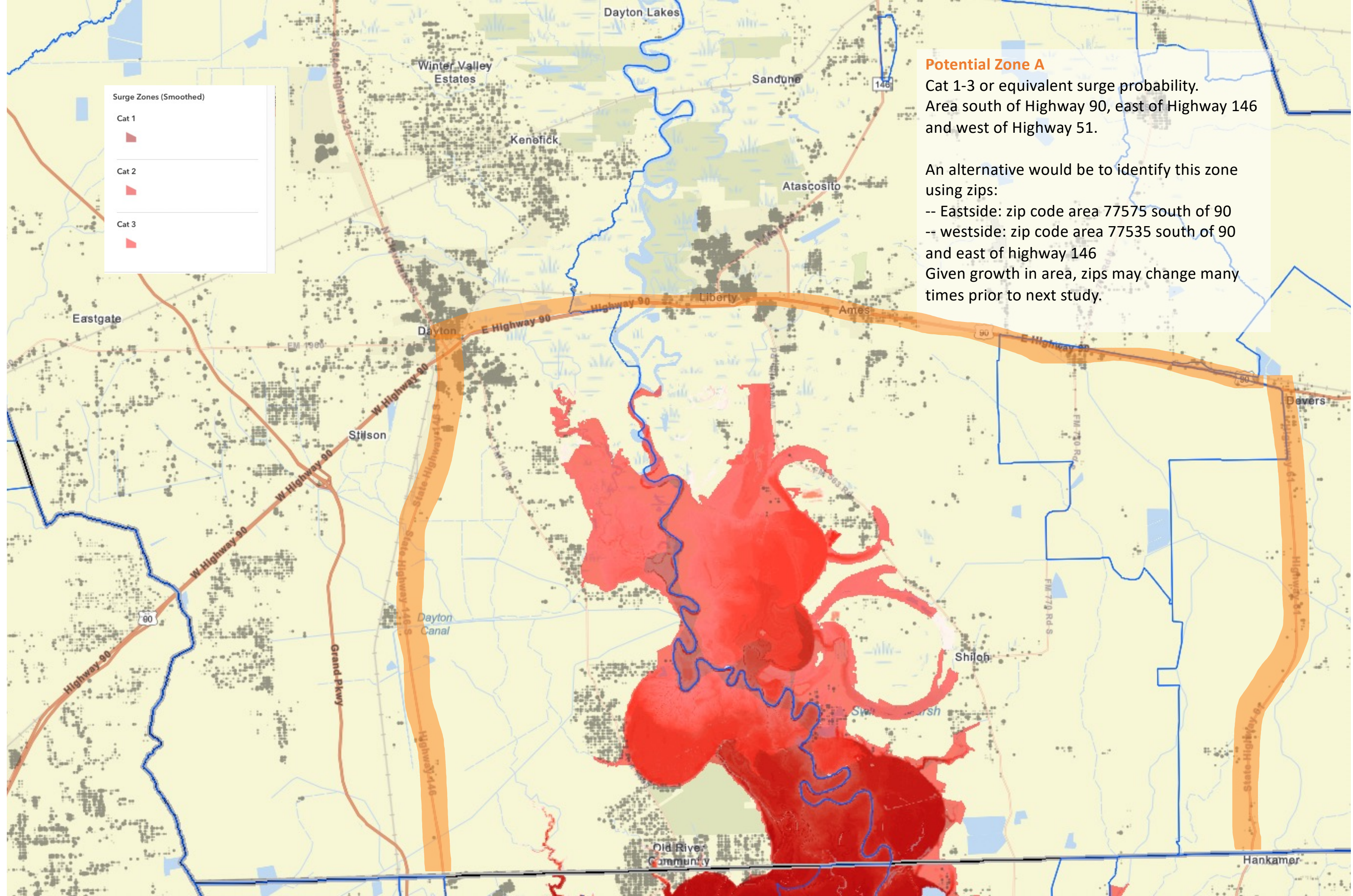


Potential Zone A

Cat 1-3 or equivalent surge probability.
Area south of Highway 90, east of Highway 146
and west of Highway 51.

An alternative would be to identify this zone
using zips:

- Eastside: zip code area 77575 south of 90
 - westside: zip code area 77535 south of 90
and east of highway 146
- Given growth in area, zips may change many
times prior to next study.



Potential Zone B

Additional evacuation risk area for Cat 4+ or equivalent surge probability.
Descriptor: Area north of Highway 90, east of Highway 321, west of Highway 146 North, and south of a line formed by County road 2326 on the west side of the Trinity and FM 834 on the eastside of the Trinity River.
-- it is possible that the railroad could be used, but there are potential surge areas above that rail.
--The zip code area on the westside is a potential, but the one on the east side is very large and would have to be reduced by using road designations to reduce the boundary.

